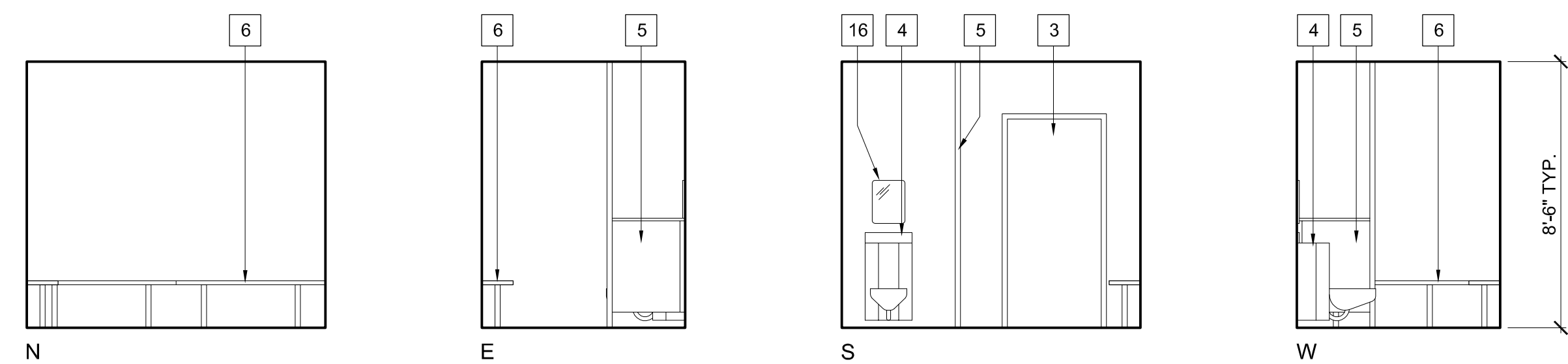
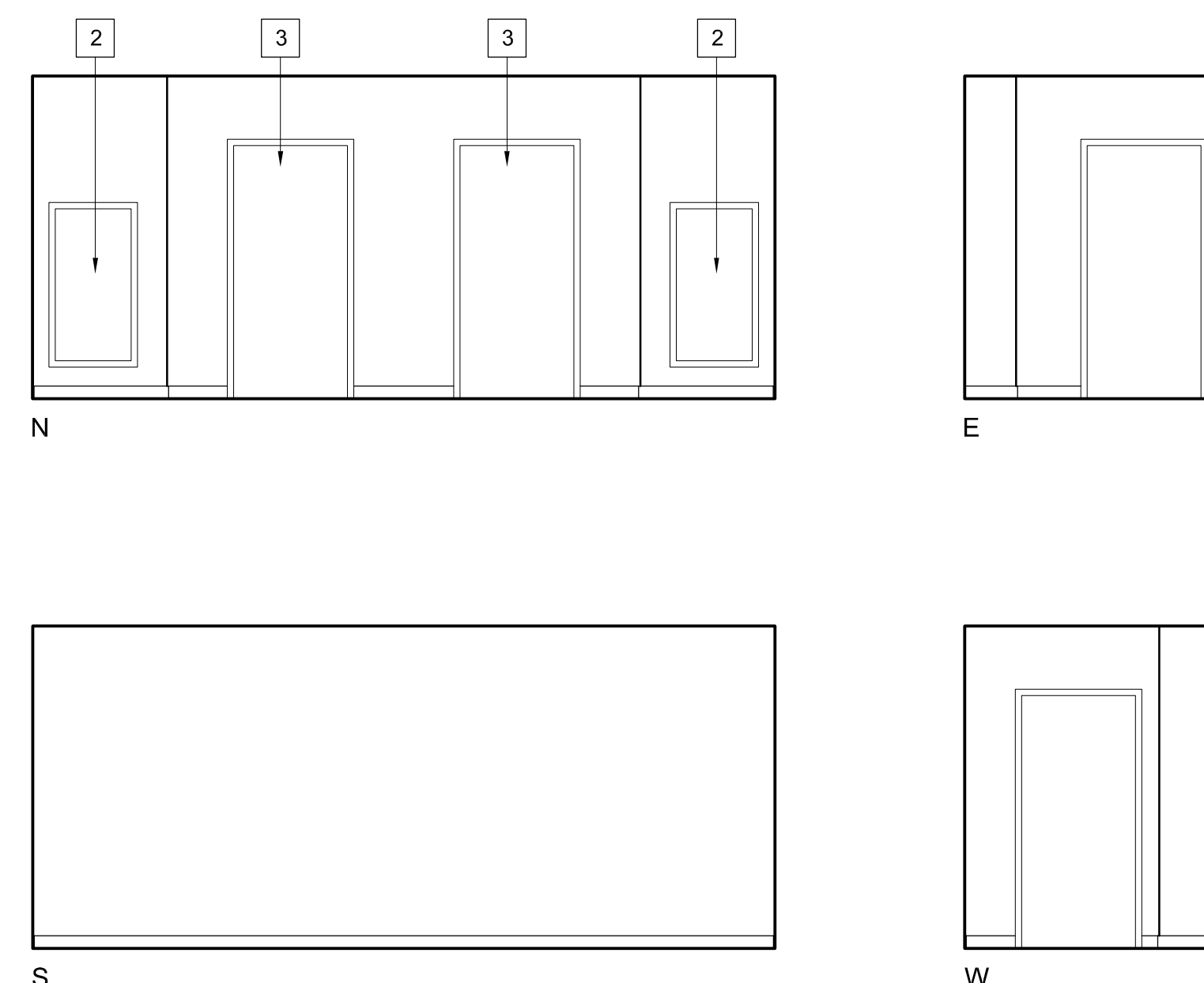


The use of these plans and specifications shall be restricted to the original site for which they were prepared and publication thereof is expressly limited to such use. Reproduction or publication by any method, in whole or in part, is prohibited. Title to these plans and specifications remain with the architect without prejudice. Visual contact with these plans and specifications shall constitute prima facie evidence of the acceptance of these restrictions.

Written dimensions on these drawings shall have precedence over scaled dimensions. Contractors shall verify and be responsible for all dimensions and existing conditions on the job and shall report any discrepancies to the architect for resolution prior to commencing work.



51 CELL 1, CELL 2 (SIM.)
SCALE : 1/4" = 1'-0"



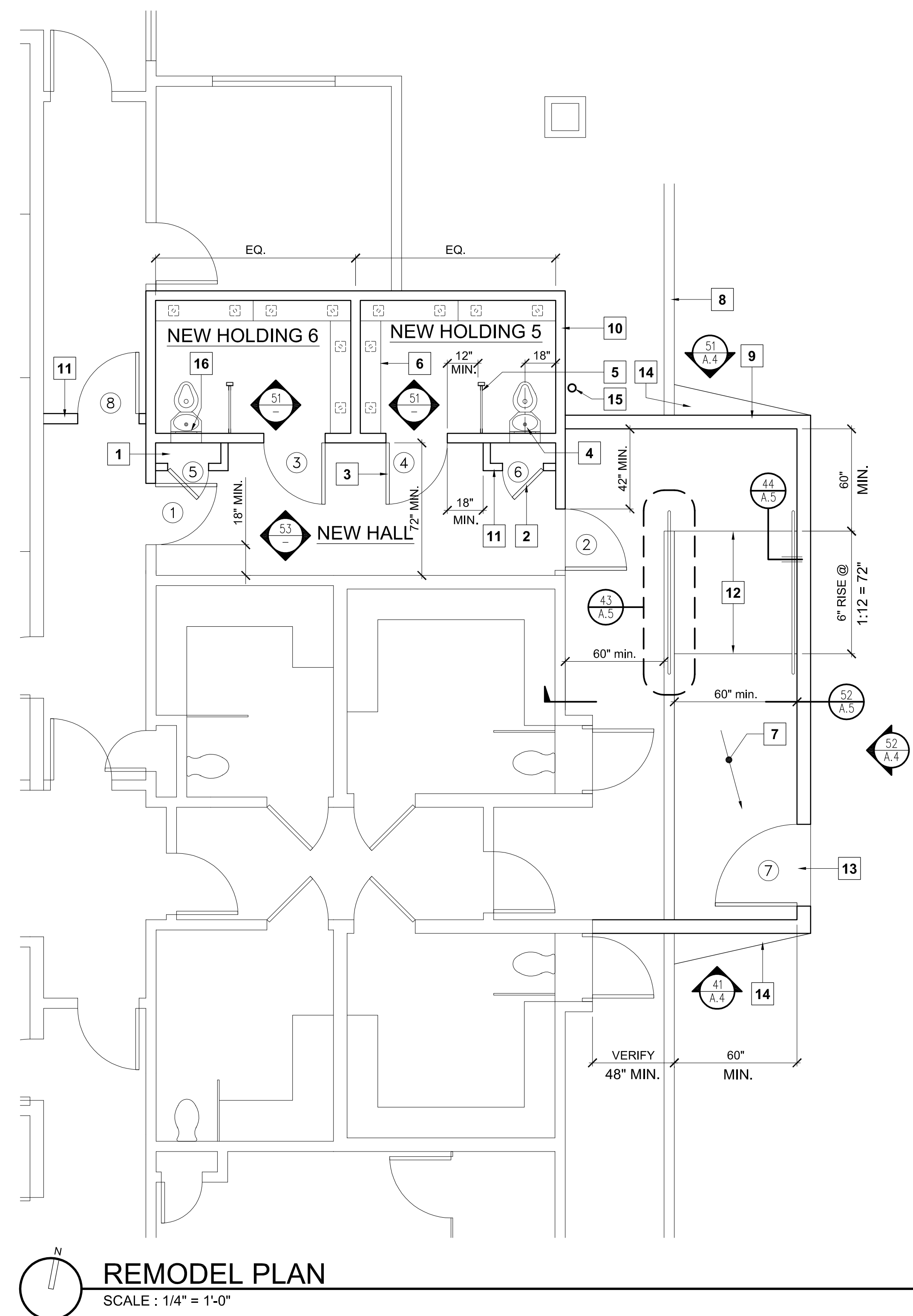
53 HALL
SCALE : 1/4" = 1'-0"

KEYNOTES

1. PLUMBING CHASE
2. 2040 SOLID CORE WOOD DOOR
3. 3070 SOLID CORE STEEL DOOR
4. "COMBY" TOILET / SINK / BUBBLER
5. STAINLESS STEEL PRIVACY SCREEN
6. STAINLESS STEEL 12" FLOOR MTD. BENCH
7. SLOPE 1% TO DRAIN
8. EXISTING CURB
9. CONCRETE BLOCK SALLY PORT WALL
10. NEW CONCRETE BLOCK WALL
11. NEW WOOD FRAMED WALL
12. RAMP
13. 4 FT. WIDE GATE
14. CRICKET ASPHALT TO FACILITATE DRAINAGE
15. RELOCATED FIRE SPRINKLER RISER
16. 12-1/2"W X 16-1/2" H STAINLESS STL. MIRROR

FINISH NOTES

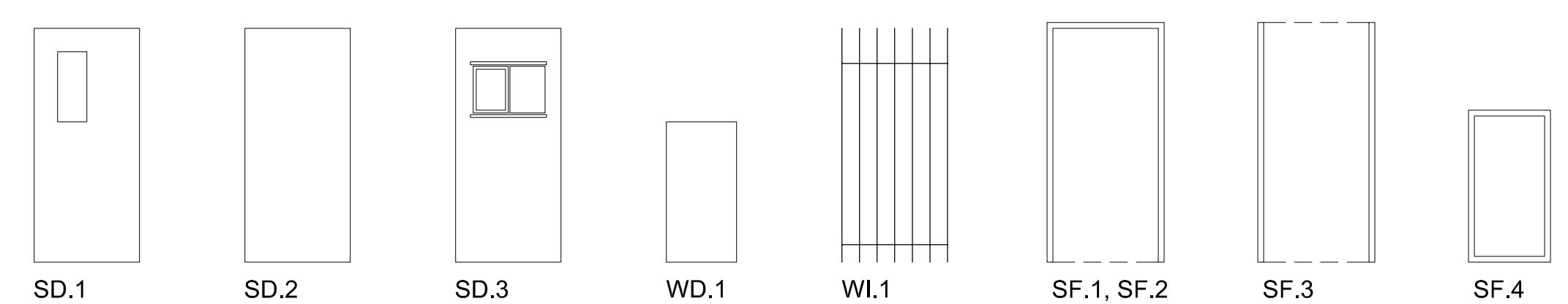
- NEW HOLDING CELLS**
FLOOR: Epoxy coating over concrete slab
WALL BASE: N/A
WALLS: Block filler and epoxy coating over concrete block
CEILING: Epoxy coating over thin-coat plaster over gypsum board
- NEW HALLWAY**
FLOOR: Epoxy coating over concrete slab
WALL BASE: 4 inch resilient wall base
WALLS: Acrylic paint over filler/concrete block or gypsum board
CEILING: Acrylic paint over thin-coat plaster over gypsum board
- NEW EXTERIOR SALLYPORT**
FLOOR: Light broom finished concrete
WALLS: Extend existing textured plaster
CEILING: Acrylic paint at new metal framing and roofing; repair existing textured plaster as required



REMODEL PLAN
SCALE : 1/4" = 1'-0"

DOOR SCHEDULE

NO.	TYPE	FRAME	WIDTH	HT.	THICK.	HDWRE.	REMARKS
1	SD.1	SF.1	3'-0"	6'-8"	1-3/4"	1	HALLWAY SECURE PASSAGE, GLASS-CLAD POLYCARBONATE, 90 MIN. RATED
2	SD.2	SF.1	3'-0"	6'-8"	1-3/4"	2	EXTERIOR ENTRY/EXIT, 90 MIN. RATED
3	SD.3	SF.2	3'-0"	6'-8"	1-3/4"	3	HOLDING CELL ENTRY, GLASS-CLAD POLYCARBONATE, 60 MIN. RATED
4	SD.3	SF.2	3'-0"	6'-8"	1-3/4"	3	HOLDING CELL ENTRY, GLASS-CLAD POLYCARBONATE, 60 MIN. RATED
5	WD.1	SF.4	2'-0"	4'-0"	1-3/4"	4	CHASE ACCESS DOOR
6	WD.1	SF.4	2'-0"	4'-0"	1-3/4"	4	CHASE ACCESS DOOR
7	WI.1	SF.3	4'-0"	6'-8"	-	5	WROUGHT IRON GATE
8	SD.1	SF.1	3'-0"	6'-8"	1-3/4"	6	HALLWAY SECURE PASSAGE, GLASS-CLAD POLYCARBONATE, NON RATED



HARDWARE SCHEDULE

- GROUP 1**
Hinges: 3, ball bearing standard duty (Hager BB1279)
Lockset: heavy duty communicating lock function, lever handle (Schlage D72PD)
Closer: inside surface mount (LCN 4110)
Door Bottom: aluminum shoe, vinyl bulb smoke seal (Pemko 217)
Threshold: accessible saddle, full width (Pemko 270)
Stop: wall stop (Ives WS 401/402)
Seals: silicone bulb, head and jambs (Pemko S88)
Electric Function: electric latch retraction (Falcon EL with power supply)
Access Control: proximity card reader (HID Thinline II)
- GROUP 2**
Hinges: 3, ball bearing heavy duty exterior (Hager BB1199)
Lock: keyed cylinder, compatible with Court standards (Schlage B500)
Panic Device: alarmed rim latch fire exit device, electric and key override (Von Duprin E98L-NL-F-SS)
Closer: inside surface mount (LCN 4110)
Door Bottom: aluminum shoe, vinyl bulb seal (Pemko 217)
Threshold: accessible saddle with riser, full width (Pemko 271/282)
Viewer: wide angle, one way (Ives U696)
Seals: silicone bulb, head and jambs (Pemko S88)
Electric Function: electric latch retraction (Von Duprin E with power supply)
Access Control: proximity card reader (HID Thinline II)
- GROUP 3**
Hinges: 3, ball bearing heavy duty (Hager BB1168)
Lock: keyed cylinder, compatible with Court standards (Schlage B600)
Pull: 1" diameter round x 8" long (Ives 8103-8)
Pull Plate: 4" x 16", custom cutouts for pull and cylinder (Ives 8300)
Seals: silicone bulb, head and jambs (Pemko S88)
Cabinet Pull (window cover): metal 4" wire pull (Hafele 117.50.610)
- GROUP 4**
Hinges: 2, standard duty (Hager AB700)
Lock: keyed cylinder, compatible with Court standards (Schlage B600)
Seals: silicone bulb, all sides (Pemko S88)
- GROUP 5**
Hinges: gate/fence manufacturer's standard, spring return
Panic Device: mortise latch exit device, electric and key override (Von Duprin E98L-NL-M)
Electric Function: electric latch retraction (Von Duprin E with power supply)
Access Control: proximity card reader (HID Thinline II)
- GROUP 6**
Hinges: 3, ball bearing standard duty (Hager BB1279)
Lockset: heavy duty communicating lock function, lever handle (Schlage D72PD)
Closer: inside surface mount (LCN 4110)
Stop: wall stop (Ives WS 401/402)
Seals: silicone bulb, head and jambs (Pemko S88)
Electric Function: electric latch retraction (Falcon EL with power supply)
Access Control: proximity card reader (HID Thinline II)