

PROJECT
**NEW HOLDING
 CELL PROJECT**
**DELANO /
 NORTH KERN
 COURT**

1122 JEFFERSON ST.
 DELANO, CALIFORNIA

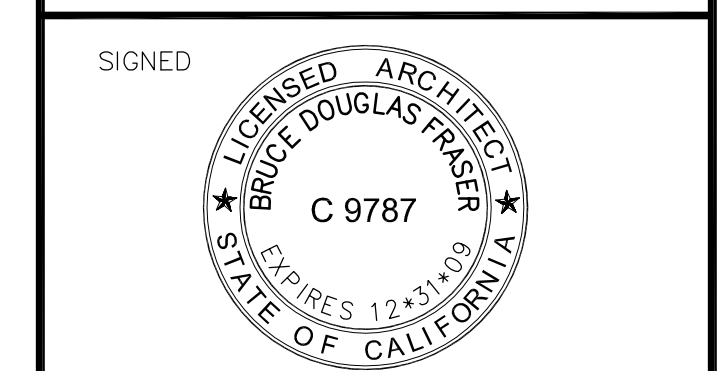
CLIENT JOB # ARCHITECT JOB #
 1027073 1002



PROJECT MANAGER BDF

DRAWN BY BS

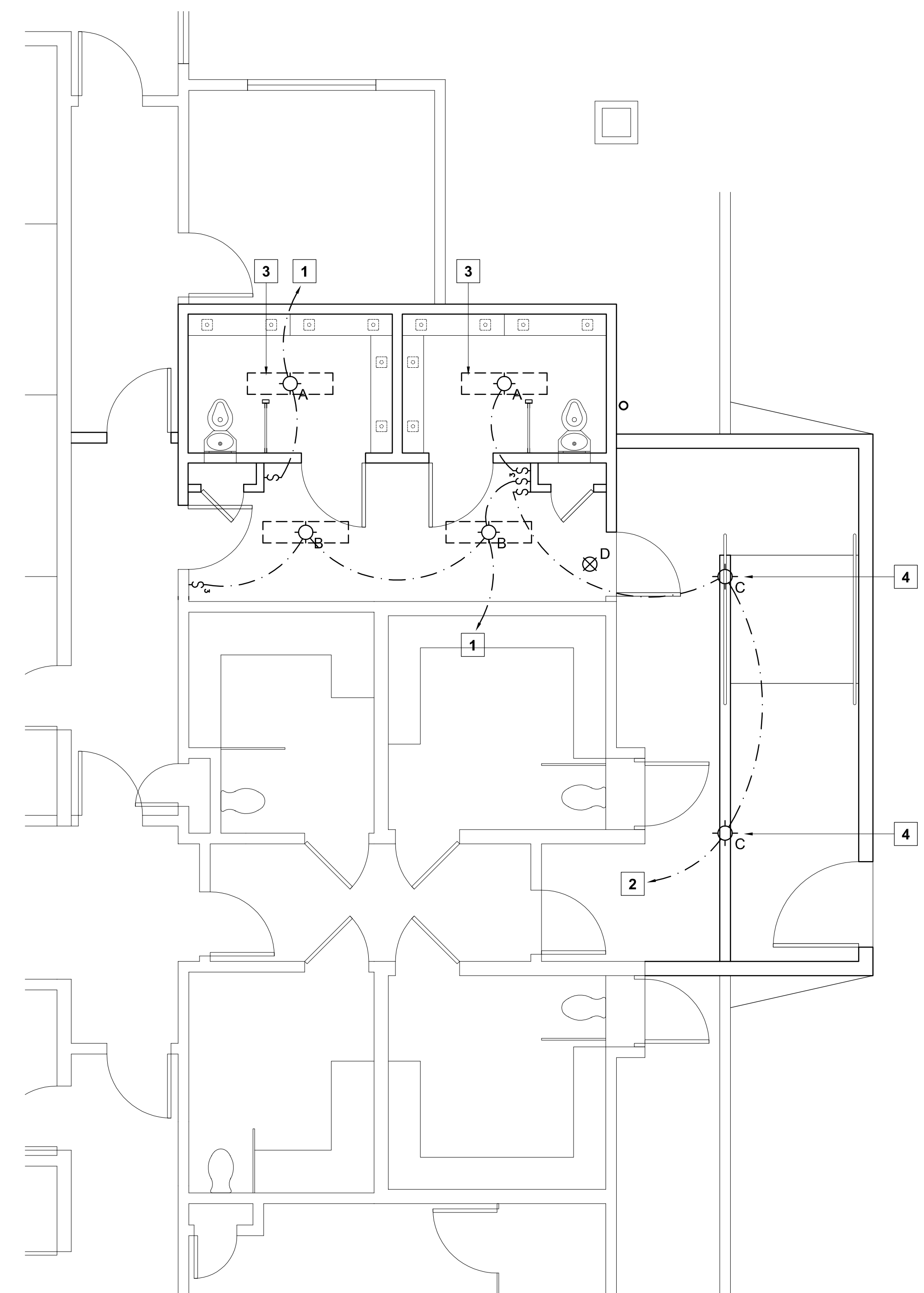
DATES 07-07-10
 09-10-10
 10-18-10 PLAN CHECK 1
 11-23-10 PLAN CHECK 2



The use of these plans and specifications shall be restricted to the original site for which they were prepared and publication thereof is expressly limited to such use. Reproduction or publication by any method, in whole or in part, is prohibited. Title to these plans and specifications remain with the architect without prejudice. Visual contact with these plans and specifications shall constitute prima facie evidence of the acceptance of these restrictions.
 Written dimensions on these drawings shall have precedence over scaled dimensions. Contractors shall verify and be responsible for all dimensions and existing conditions on the job and shall report any discrepancies to the architect for resolution prior to commencing work.

SHEET TITLE
**LIGHTING PLAN,
 POWER / SIGNAL PLAN**

SHEET #
E.1



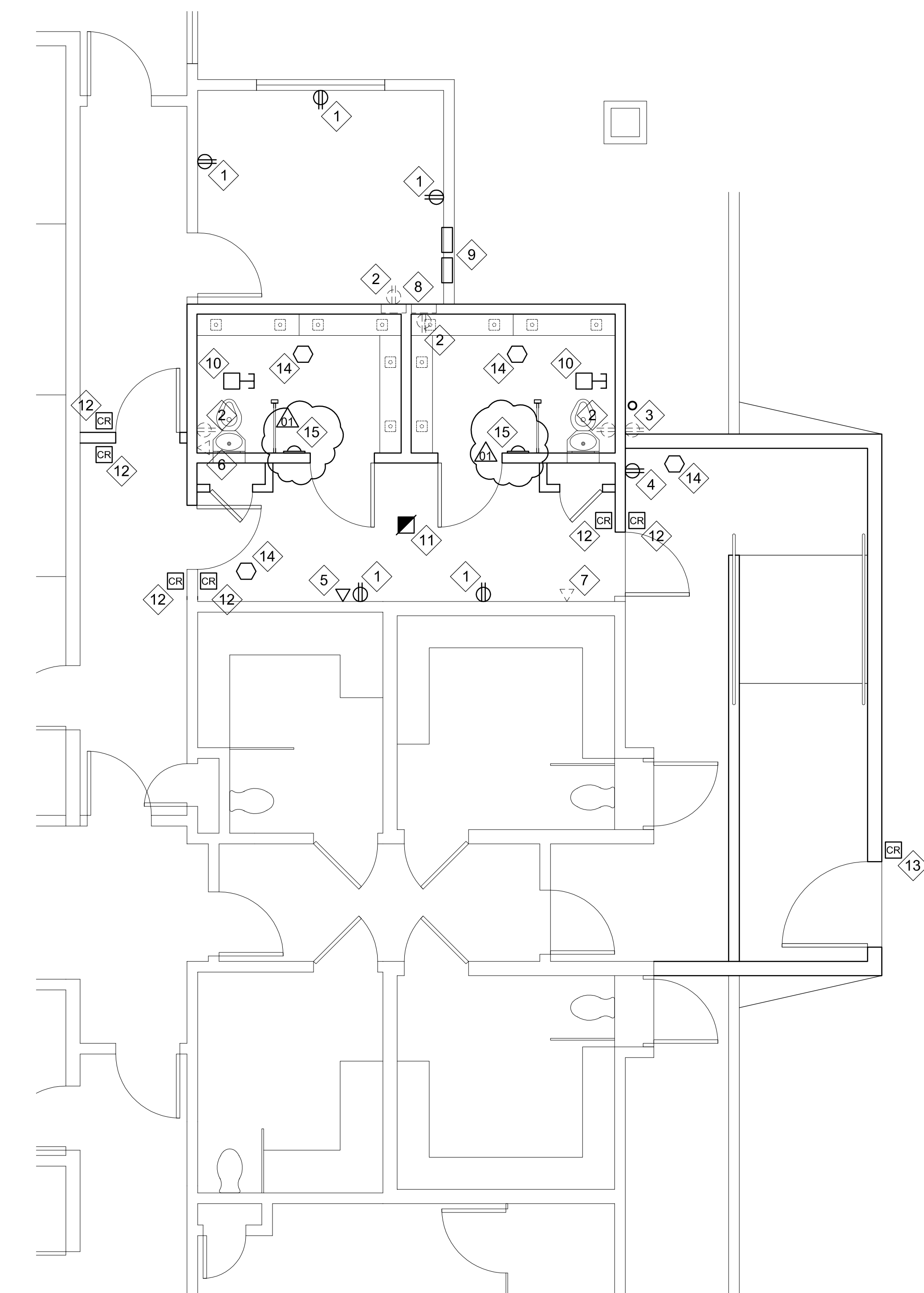
LIGHTING PLAN
 SCALE : 1/4" = 1'-0"

LIGHT FIXTURE SCHEDULE

TYPE	MFGR	CATALOG NO.	LAMP(S)	REMARKS
A	KENALL	SDSAT5	2 - 28W T5 fluor.	"Mighty Mac" ceiling surface linear correctional fixture, 16 GA housing, white finish, prismatic polycarbonate lens, Torx fasteners
B	KENALL	SCT4	3 - 28W T5 fluor.	"Mighty Mac" ceiling surface linear high-abuse fixture, 16 GA housing, white finish, prismatic polycarbonate lens
C	KENALL	H1212FM	2 - 32W PLT fluor.	Herculux ceiling mounted high-abuse wet location fixture, dark bronze finish, clear prismatic lens
D	KENALL	METSU	LED	Millenium Metrex ceiling canopy mounted correctional fixture, white with red graphics, EL emergency battery option

LIGHTING KEYNOTES

- POWER FROM EXISTING CEILING LIGHTING CIRCUIT(S).
- POWER FROM NEW SPARE CIRCUIT ON PANEL "A".
- SEE DETAIL 34, SHEET A.5, FOR MOUNTING AND FIRESTOPPING.
- MOUNT DIRECTLY TO STEEL ROOF STRUCTURE WITH MECHANICAL CONNECTORS TO RESIST 500 LBS. VERTICAL OR LATERAL FORCE.



POWER / SIGNAL PLAN
 SCALE : 1/4" = 1'-0"

POWER, SIGNAL KEYNOTES

- EXISTING WALL POWER OUTLET TO REMAIN.
- EXISTING WALL POWER OUTLET, BOX, AND CONDUIT TO BE REMOVED.
- EXISTING WP POWER OUTLET TO BE REMOVED, CONDUIT/WIRING TO BE RELOCATED.
- NEW WP AND TAMPER PROOF POWER OUTLET WITH RELOCATED CONDUIT/WIRING.
- EXISTING WALL COMMUNICATIONS OUTLET TO REMAIN.
- EXISTING WALL COMMUNICATIONS OUTLET, BOX, CONDUIT TO BE REMOVED.
- EXISTING PAY PHONE OUTLET, BOX, CONDUIT TO BE REMOVED.
- EXISTING EMERGENCY CALL ANNUNCIATOR AND FIRE ALARM PANEL TO BE RELOCATED.
- NEW LOCATION OF EMERGENCY CALL ANNUNCIATOR AND FIRE ALARM PANEL.
- NEW DUCT SMOKE DETECTOR, WIRED TO RELOCATED FIRE ALARM PANEL.
- NEW CEILING SMOKE DETECTOR, WIRED TO RELOCATED FIRE ALARM PANEL.
- NEW CARD READER DOOR ACCESS CONTROL; PROVIDE CONCEALED CONDUIT AND WIRING AS REQUIRED TO ACTUATE ELECTRIC DOOR STRIKE; POWER TRANSFORMER(S) FROM SPARE CIRCUIT ON PANEL "B".
- NEW CARD READER GATE ACCESS CONTROL; PROVIDE CONCEALED CONDUIT AND WIRING AS REQUIRED TO ACTUATE ELECTRIC DOOR STRIKE.
- NEW BOX AND MOUNTING PLATE FOR CCTV VIDEO CAMERA; PROVIDE CONDUIT AS REQUIRED FOR SYSTEM VENDOR TO CONNECT TO MONITORING STATION.
- AUDIO MONITORING MICROPHONE, RECESSED WALL-MOUNTED AT +90°; PROVIDE CONDUIT AND LOW VOLTAGE WIRING AS REQUIRED TO MONITORING STATION.