

















NO SMOKING
No Open Flames
No Smoking
No Smoking

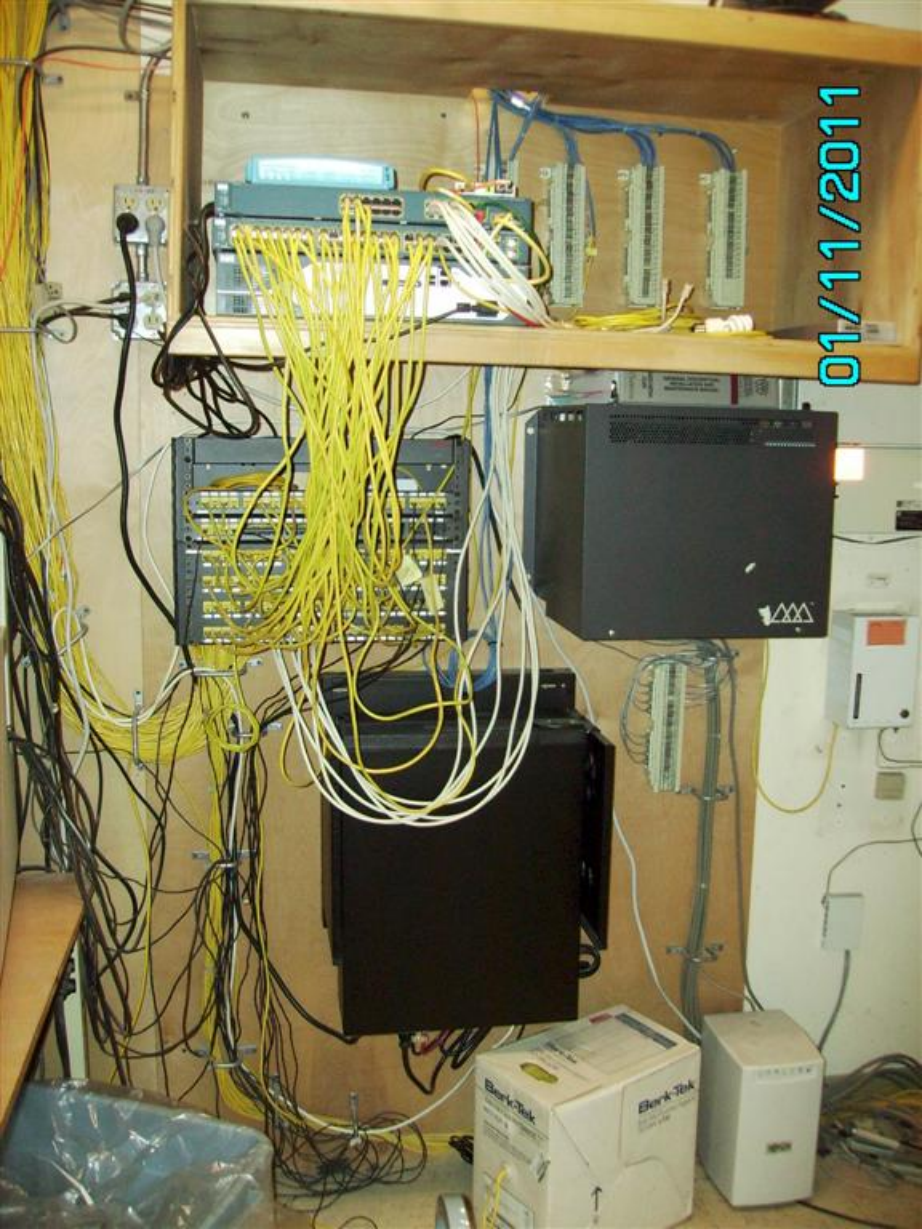
NO SMOKING
No Open Flames
No Smoking
No Smoking

SUPER COURT



01/11/2011

01/11/2011



01/11/2011

439
0/33

MODERN

CPM 4

Altronix

(209) secured by ADT

secured by ADT

secured by ADT

secured by ADT

J.B.

secured by ADT

Property
of
GTE

01/11/2011



01/10/2011



01/10/2011



01/10/2011



01/10/2011



01/10/2011

01/10/2011





01/10/2011



01/10/2011

01/10/2011




01/10/2011

SEWER / ELEC /
COMM TRENCH

ELEC / COMM
TRENCH



A photograph showing a sewer clean-out access point on a gravel surface. The access point is a black, circular, raised cover with a small rectangular handle on top. A black arrow points from a yellow text box to this cover. To the left of the cover are yellow wooden planks, possibly part of a ramp or stairs. To the right is a light-colored wooden wall or fence. The ground is covered in dark gravel and some green moss.

SEWER CLEAN-
OUT AT
MECHANICAL
OFFICE TRAILER

01/10/2011

SEWER MANHOLE

SEWER LINES

01/10/2011





01/10/2011

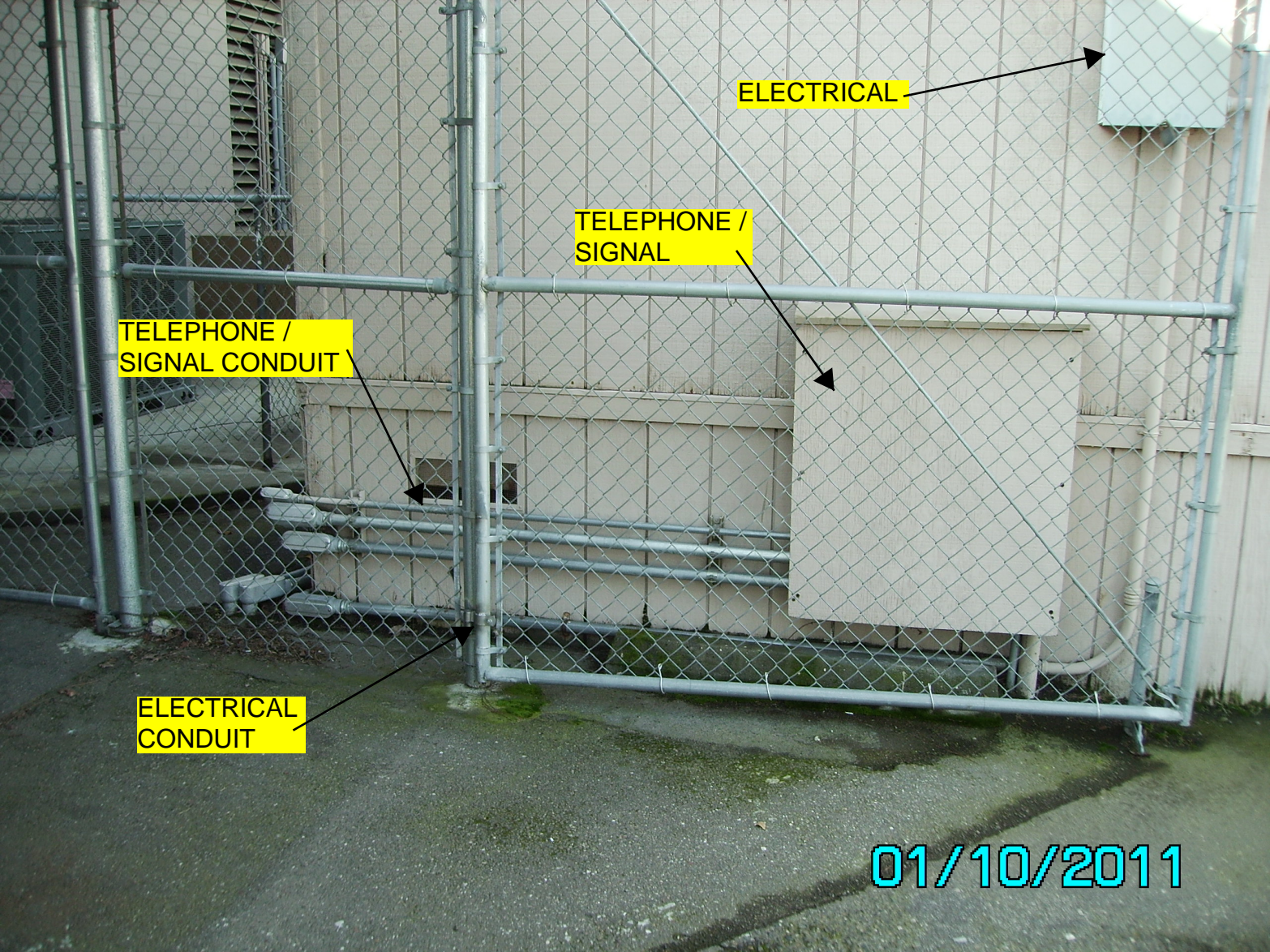


01/10/2011

01/10/2011

ELEC / COMM /
SEWER TRENCH





ELECTRICAL

TELEPHONE /
SIGNAL

TELEPHONE /
SIGNAL CONDUIT

ELECTRICAL
CONDUIT

01/10/2011

01/10/2011





01/10/2011

315



05/17/2010

Not a member?
Join the Club
and receive
this book
FREE!

05/17/2010



05/17/2010



05/17/2010



05/17/2010



05/17/2010



05/17/2010



05/17/2010



05/17/2010



05/17/2010



05/17/2010



05/17/2010



05/17/2010



05/17/2010



05/17/2010



05/17/2010

05/17/2010





05/17/2010



05/17/2010



05/17/2010



05/17/2010



05/17/2010

05/17/2010





05/17/2010



05/17/2010



05/17/2010



05/17/2010



05/17/2010

01/10/2011





01/10/2011



01/10/2011



01/10/2011



05/17/2010



05/17/2010



05/17/2010



05/17/2010



05/17/2010



05/17/2010



05/17/2010



05/17/2010

01/10/2011

CHALLENGER

DANGER
HIGH
VOLTAGE
KEEP AWAY

PG&E METER
SECTION



DANGER
HIGH
VOLTAGE
KEEP AWAY

MAIN SWITCH
GEAR

Westinghouse

01/10/2011

DANGER
HIGH
VOLTAGE
KEEP AWAY



01/10/2011

01/10/2011

DANGER
HIGH
VOLTAGE
KEEP AWAY

TELEPHONE
TO TRAILERS

COMM /
COMPUTER TO
TRAILERS

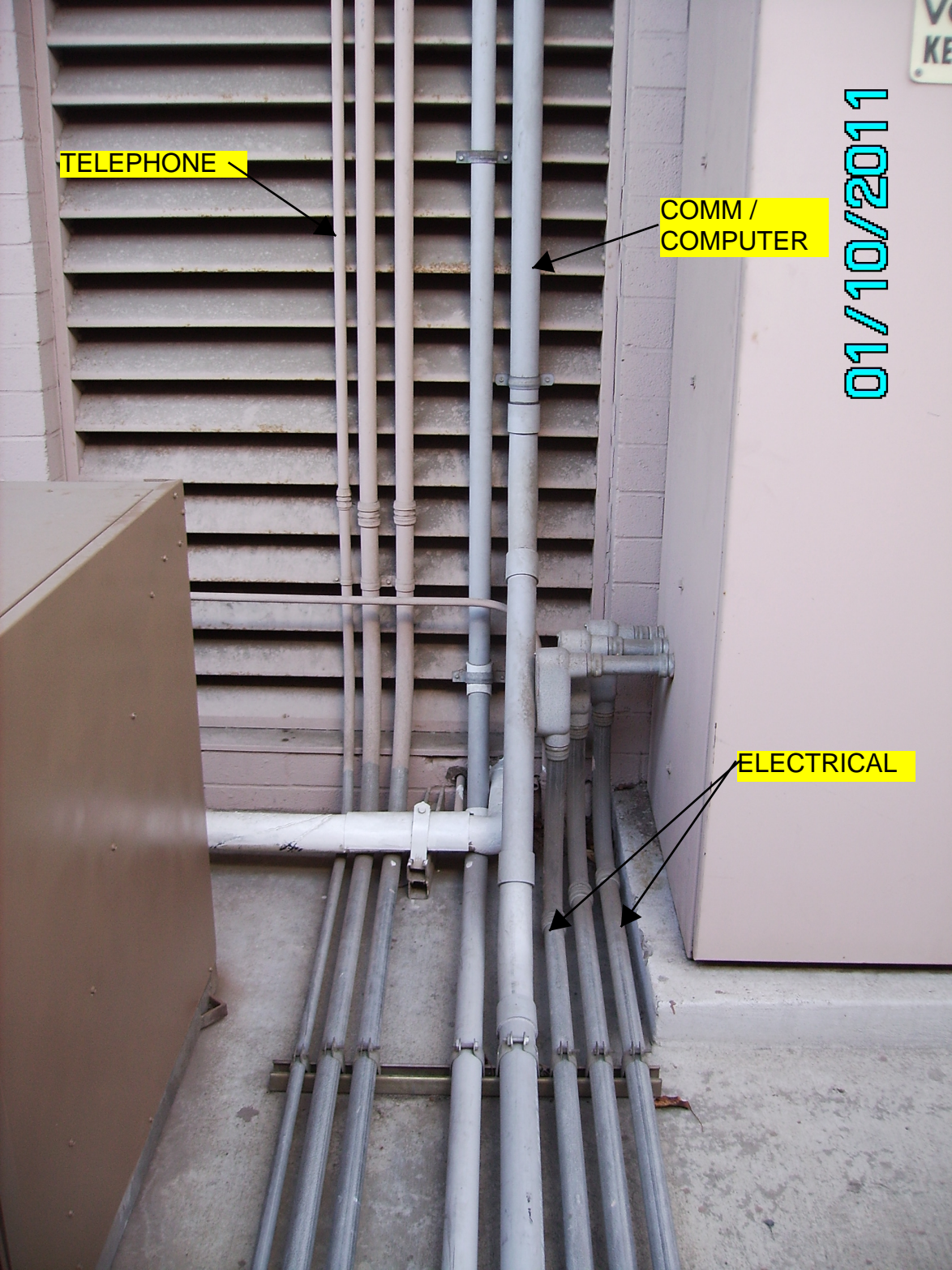


TELEPHONE

COMM /
COMPUTER

01/10/2011

ELECTRICAL





01/10/2011

GAS METER
#38548070

38548070

01/10/2011

01/10/2011





LENNOX

MODEL NUMBER _____ HS6-1253V-67W
SERIAL NUMBER 5470502955
REFRIGERANT _____ Refrigerant-22
CHARGE _____
TEST, PRESSURE PSIG _____ High 455
Low 150

ELECTRICAL RATING
208/240 VOLTS-60 HERTZ

NOT TO BE OPERATED AT LESS THAN
187 VOLTS OR MORE THAN 264 VOLTS

	HP	PH	FLA	LRA
Compressor	3		42.8	240.0
Cond. Fan				
motrs. (2)	3/4	1	2.3 max.	5.7

MAXIMUM UNIT AMPERES 47.4
FOR OUTDOOR USE

5-4-49W22

LENNOX Industries Inc.

MARSHALLTOWN, IOWA • DES MOINES, IOWA
COLUMBUS, OHIO • LOS ANGELES, CALIFORNIA
SYRACUSE, NEW YORK • DECATUR, GEORGIA
FORT WORTH, TEXAS • SALT LAKE CITY, UTAH
TORONTO, ONTARIO, CANADA
CALGARY, ALBERTA, CANADA

01/10/2011

01/10/2011



MODEL NO. /	RAWL-120CAZ	MFD./FAB	07/2009
MODÈLE N°			
SERIAL NO. /	7759F280902666	OUTDOOR USE /	
N° DE SÉRIE		USAGE EXTÉRIEUR	
VOLTS	208/230	PHASE. 3	HERTZ 60
COMPRESSOR (EACH) /	R.L.A. 30.1/30.1	L.R.A. 225	
COMPRESSEUR (CHAQUE)			
OUTDOOR FAN MOTOR (EACH) /	F.L.A. 2.4	HP. 1/3	
MOTEUR VENTIL. EXT. (CHAQUE)			
MIN. SUPPLY CIRCUIT AMPACITY /	43/43	AMP	
COURANT ADMISSIBLE D'ALIM. MIN.			
MAX. FUSE OR CKT. BRK. SIZE* /	60/60	AMP	
CAL. MAX. DE FUSIBLE/DISJ*			
MIN. FUSE OR CKT. BRK. SIZE* /	50/50	AMP	
CAL. MIN. DE FUSIBLE/DISJ*			
DESIGN PRESSURE HIGH /	450 PSIG/3103 kPa		
PRESSION NOMINALE HAUTE			
DESIGN PRESSURE LOW /	250 PSIG/1724 kPa		
PRESSION NOMINALE BASSE			
TOTAL SYSTEM CHARGE /		R410A	
CHARGE TOTALE SYSTÈME			
SEE INSTRUCTIONS INSIDE ACCESS PANEL.			
VOIR INSTRUCTIONS DANS LE PANNEAU D'ACCÈS			
RHEEM AIR CONDITIONING DIVISION		ASSEMBLED	
FORT SMITH, ARKANSAS		IN	
		USA	
*HACR TYPE BREAKER FOR U.S.A. /			
DISJONCTEUR DIFFÉRENTIEL			

92-20842-15-01

01/10/2011

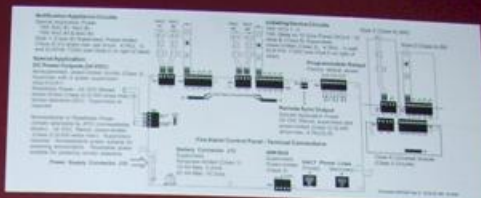


AIR CONDITIONING
SYSTEMS EQUIPMENT

01/10/2011



01/10/2011



ZONES
1. Waterflow
2. Smoke Det. & Over Smoke



INST. 10/10/11

For T. 10/10/11

Exhaust Box

Valve to

Shut the alarm

near City

Over smoke

clouds near

DA 10/10/11

Fire Alarm Control Panel

Model: H765208744

WARNING: Do not allow smoke conditions to develop in the system. The protection the system offers has been compromised or eliminated where a fire condition exists.

WIA 133-87-6

TM

SPRINK

Fire Alarm Control Panel

Model: H765208744

WARNING: Do not allow smoke conditions to develop in the system. The protection the system offers has been compromised or eliminated where a fire condition exists.

WIA 133-87-6

TM

SPRINK

CAUTION: Do not allow smoke conditions to develop in the system. The protection the system offers has been compromised or eliminated where a fire condition exists.

01/10/2011

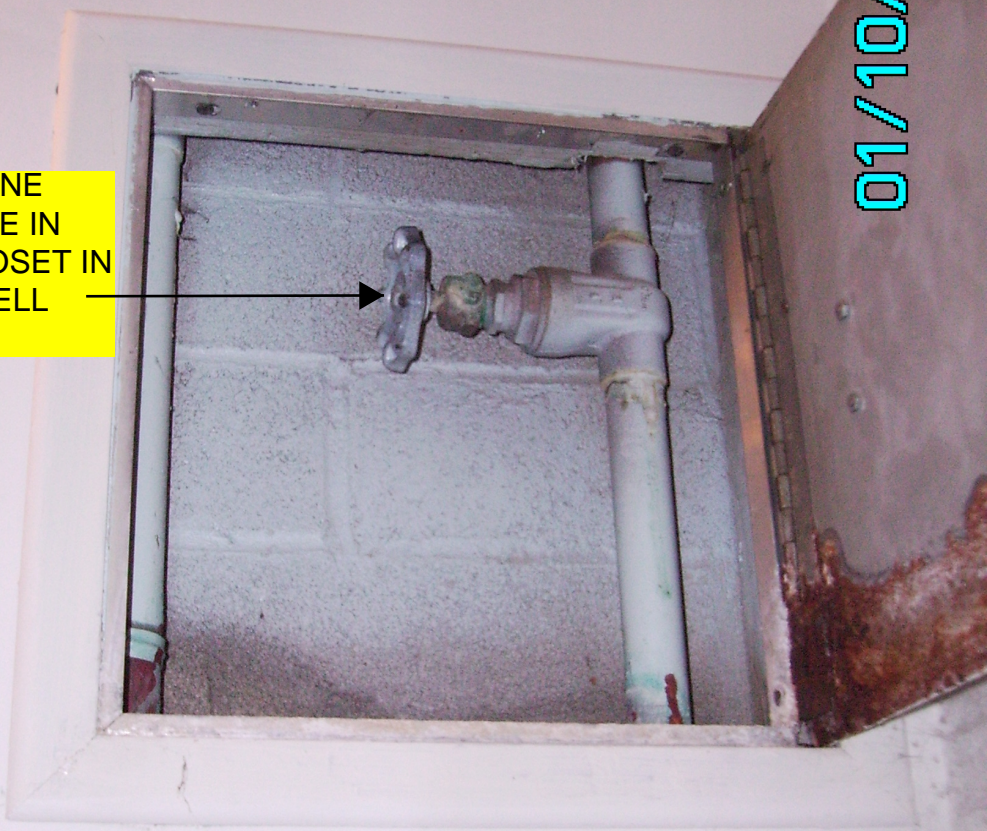
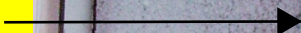


01/10/2011



01/10/2011

3/4" FIRE LINE
TEST VALVE IN
MAINT. CLOSET IN
HOLDER CELL
AREA.



01/10/2011

FIRE SPRINKLERS
IN HOLDING
CELLS AND
HALLS ONLY



MONITORING
CENTER

1-800-428-7174

tyco

Fire &
Security

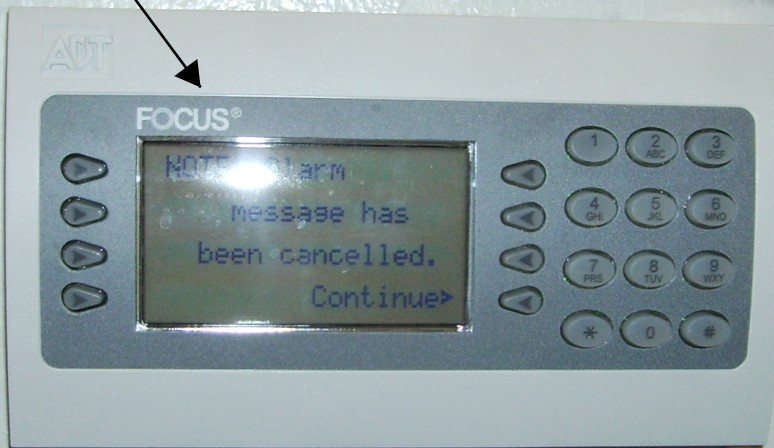
ACCT# H765209580
ADT

Jose Gonzalez
Commercial Technician

ADT Security Services, Inc.
4725 Enterprise Way
Suite 5
Modesto, CA 95356

Tele: 209-574-2700
Mobile: 209-495-2216
Fax: 209-529-1618
www.adt.com

ALARM PANEL



01/10/2011

01/10/2011



(209) 465-5661



01/10/2011

01/10/2011

PANEL L2

01/10/2011



01/10/2011

Det.

WESTINGHOUSE
CIRCUIT DIRECTORY

1 *100V 10A*
2 *100V 10A*
3 *100V 10A*
4 *100V 10A*
5 *100V 10A*
6 *100V 10A*
7 *100V 10A*
8 *100V 10A*
9 *100V 10A*
10 *100V 10A*
11 *100V 10A*
12 *100V 10A*
13 *100V 10A*
14 *100V 10A*
15 *100V 10A*
16 *100V 10A*
17 *100V 10A*
18 *100V 10A*
19 *100V 10A*
20 *100V 10A*

ALARM
ITEM

WESTINGHOUSE
CIRCUIT DIRECTORY

21 *100V 10A*
22 *100V 10A*
23 *100V 10A*
24 *100V 10A*
25 *100V 10A*
26 *100V 10A*
27 *100V 10A*
28 *100V 10A*
29 *100V 10A*
30 *100V 10A*
31 *100V 10A*
32 *100V 10A*
33 *100V 10A*
34 *100V 10A*
35 *100V 10A*
36 *100V 10A*
37 *100V 10A*
38 *100V 10A*
39 *100V 10A*
40 *100V 10A*
41 *100V 10A*
42 *100V 10A*



01/10/2011



01/10/2011



01/10/2011



FOR YOUR SAFETY READ BEFORE OPERATING

WARNING: If you do not follow these instructions exactly, a fire or explosion may result causing property damage, personal injury or loss of life.

A. This appliance does not have a pilot. It is equipped with an ignition device which automatically lights the burners. Do not try to light the burner by hand.

B. BEFORE OPERATING smell all around the appliance area for gas. Be sure to smell next to the floor because some gas is heavier than air and will settle on the floor.

WHAT TO DO IF YOU SMELL GAS

- Do not try to light any appliance.
- Do not touch any electric switch; do not use any phone in your building.
- Immediately call your gas supplier from a neighbor's phone. Follow the gas supplier's instructions.
- If you cannot reach your gas supplier, call the fire department.

C. Use only your hand to move the gas control knob. Never use tools. If the knob will not move by hand, don't try to repair it; call a qualified service technician. Force or attempted repair may result in a fire or explosion.

D. Do not use this appliance if any part has been under water. Immediately call a qualified service technician to inspect the appliance and to replace any part of the control system and any gas control which has been under water.

OPERATING INSTRUCTIONS

1. STOPI Read the safety information on this label.
2. Set the thermostat to lowest setting.
3. Turn off all electric power to the appliance.
4. This appliance does not have a pilot. It is equipped with an ignition device which automatically lights the burner. Do not try to light the burner by hand.
5. Remove control door.
6. Turn gas control knob from the "ON" position clockwise to the "OFF" position against the stop.
7. Wait five (5) minutes to clear out any gas. Then smell for gas, including near the floor. If you smell gas, STOP! Follow "B" in the safety information on this label. If you don't smell gas, go to the next step.
8. Turn gas control knob from the "OFF" position counterclockwise to the "ON" position against stop.
9. Replace control door.
10. Turn on all electric power to the appliance.
11. Set the thermostat to desired setting.
12. If the appliance will not operate, follow the instructions "To Turn Off Gas To Appliance" and call your service technician or gas supplier.



Note: Knob cannot be moved from "ON" to "OFF" unless knob is pushed to "OFF" position.

TO TURN OFF GAS TO APPLIANCE

1. Set the thermostat to the lowest setting.
2. Turn off all electrical power to the appliance if service is to be performed.
3. Remove control door.
4. Turn gas control knob from the "ON" position clockwise to the "OFF" position against the stop.
5. Replace control door.

82-21310-40-03

DO NOT REMOVE THIS LABEL

WARNING

OWNER/OPERATOR SAFETY INFORMATION

- Make sure this furnace:
- is properly installed, serviced, and repaired by qualified service technicians
- has enough room around it to ensure adequate clearance from combustible materials, and to ensure adequate air supply
- replace filters with filters the same size as the originals
- clean permanent filters

For best operation, check filters monthly. If filters are dirty, replace filters with filters the same size as the originals.

INSTALLER SAFETY INFORMATION

This furnace must be installed indoors by a qualified installer, according to manufacturer's instructions and local codes, in the absence of local codes, follow National Fuel Gas Code (ANSI Z223.1). In Canada, follow CAN/CSA B149. DO NOT install in mobile home.

See Installation Instructions and User's Information Manual (if this information is not included with the furnace, contact the nearest dealer or distributor) provided with this furnace. For help or additional information, call a qualified installer, service agency, or gas supplier.

WARNING: SERVICE INSTALLATION, ADJUSTMENT, MAINTENANCE, SERVICE, REPAIR, OPERATION, OR MAINTENANCE CAN CAUSE SEVERE INJURY, PROPERTY DAMAGE, OR DEATH FROM FLAMMABLE GAS, FIRE, CARBON MONOXIDE, ELECTRICAL SHOCK, OR CARBON MONOXIDE.

WARNING: INFORMATION ON THIS PRODUCT CONTAINS CHEMICAL HAZARD TO OTHER AUTOMATIC VEHICLES.

AVERTISSEMENT: Une installation, une modification, une maintenance ou une réparation incorrecte peuvent entraîner des dommages, des blessures graves, des incendies ou des explosions. Ne tentez pas de réparer ou de modifier cet appareil sans l'aide d'un professionnel qualifié. Suivez les instructions d'installation et d'entretien fournies avec l'appareil.

AVERTISSEMENT: Les informations sur ce produit contiennent des renseignements chimiques dangereux pour d'autres véhicules automatiques.

CARBON MONOXIDE MAY BE RELEASED

- CAUSING:
- SEVERE PERSONAL INJURY
- DEATH

DO NOT block the flow of the air to or from the furnace.

WARNING

FIRE

- CAN CAUSE:
- PROPERTY DAMAGE
- SEVERE PERSONAL INJURY
- DEATH

DO NOT store or use gasoline or other flammable or combustible vapors, liquids, or materials near this furnace or any other appliance.

WARNING

NATURAL GAS MAY LEAK AND EXPLODE

- CAUSING:
- PROPERTY DAMAGE
- SEVERE PERSONAL INJURY
- DEATH

You may not be able to detect a gas leak by smell alone.

- Do not attempt a leak.
- Do not light any electronic switch.
- Do not use any phone in your building.

Go go to a neighboring house and phone your gas company or the fire department. Follow their instructions. Do not return to your building until you are told to return. DO NOT

WARNING

HAZARD TO VEHICLE!

- CAUSING:
- SEVERE PERSONAL INJURY
- DEATH

Turn off electrical power before servicing this unit or servicing. Service must be performed by a qualified service person.

WARNING

01/10/2011

01/10/2011





01/10/2011

01/10/2011



Information (Information in French)
Information (Information in French)

Information (Information in French)
Information (Information in French)



01/10/2011



Mr. Paul
Mr. Paul

CHERRY STREET MAIL LISTS
12

01/10/2011



01/10/2011



Cotterman

01/10/2011





01/10/2011



01/10/2011



01/10/2011



01/10/2011

01/10/2011



T-469

CA 403 X 1026-1075



01/10/2011

01/10/2011

PANEL P



01/10/2011



01/10/2011





01/10/2011



Advanced Distributor Products

Model VS 28322

MODEL P19460 - M215AP
SERIAL NO 7108H26913
REFRIGERANT R 22 TXV INSTALLED
DESIGN PRESS MAX 450 PSI



LISTED TYPE 1



REFRIGERANT EVAPORATOR ALSO AS SECTION OF HEAT PUMP

SERIAL NUMBER



7108H26913

508 545 1163 16 501

01/10/2011



01/10/2011

01/10/2011






01/10/2011

01/10/2011



Westinghouse					
SWITCHBOARD					
AMPS	NEUT. AMPS	VOLTS	PH	WIRE	MFD. AT
300	300	240/480			112
DRAWING NO.		S.O. NO.		SECT. NO.	DATE
VS-703-2048		334222001.1			5/80
SUITABLE FOR USE AS SERVICE EQUIPMENT					
Westinghouse Electric Corporation 840A348H01 MADE IN U.S.A.					



01/10/2011

01/10/2011

Trailors

A

B

C



MAIN

MAIN

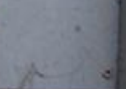


PANEL L-2

PANEL L-1



PANEL P





ON

OPEN
COVER
OFF



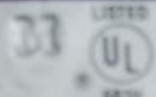
WARNING



01/10/2011



FDP Unit



Cat. FDP 326R

Series D

Amps 600

Poles 3

Max. Volts 240V

Volts

240V

Std. HP

75

Max. HP

100

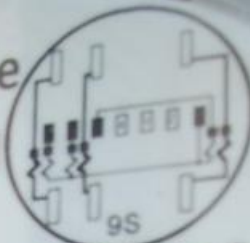
See Additional Information Inside

SERVICE DISCONNECT

01/10/2011



kV2ce





OVO
FITZALL™

Watthour Meter

Silver Spring Networks 001380FFFE08C14F

Contains
FIELD ONE NOTES
C. 100.1.1.1.1

1003873576



36 005 051

OB
OC
OE
OI
OK

OL
OM
OQ
OR
OT
OV
OW
OX
OZ

Mult by 90 VTR _____ 1CTR _____ :5 PK_n _____
CL 20 120-480V 4W FM9S Kt 1.8
787X980016 50/60Hz CA 0.2 TA 2.5 Kh 1.8 TV 120

01/10/2011













SUPERIOR
MANTECA

1045

NO PARKING
EXCEPT
IN DESIGNATED AREAS

ADA
ACCESSIBLE
ENTRY

1045

















315















315

SUPERIOR COURT
MANTECA BRANCH



315

SUPERIOR COURT
SANTA CLARA BRANCH



315



SUPER
MARKET



315

SUPERIOR COURT
MANTECA BRANCH



315

SUPERIOR COURT
SANTA CLARA BRANCH



315

SUPERIOR COURT
SANTA CLARA COUNTY











































VO
KEEP









DANGER
HIGH VOLTAGE
DO NOT TOUCH

NOTICE

















