

NEW COMMON BUILDING

LAS TABLAS ROAD
TEMPLETON, CA

CLIENT JOB # ARCHITECT JOB #
0708B

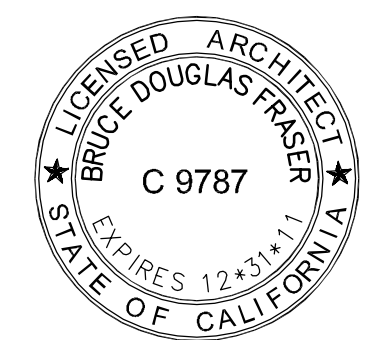


PROJECT MANAGER BDF

DRAWN BY DDL

DATES	DESIGN DEVELOPMENT	4/15/10
	FIRST SUBMITTAL	6/02/10
	PLAN CHECK 1	8/16/10

SIGNED



The use of these plans and specifications shall be restricted to the original site for which they were prepared and publication thereof is expressly limited to such use. Reproduction or publication by any method, in whole or in part, is prohibited. Title to these plans and specifications remain with the architect without prejudice. Visual contact with these plans and specifications shall constitute prima facie evidence of the acceptance of these restrictions.

Written dimensions on these drawings shall have precedence over scaled dimensions. Contractors shall verify and be responsible for all dimensions and existing conditions on the job and shall report any discrepancies to the architect for resolution prior to commencing work.

SHEET TITLE

COMMON BUILDING REFLECTED CEILING PLAN / LIGHTING PLAN

SHEET #

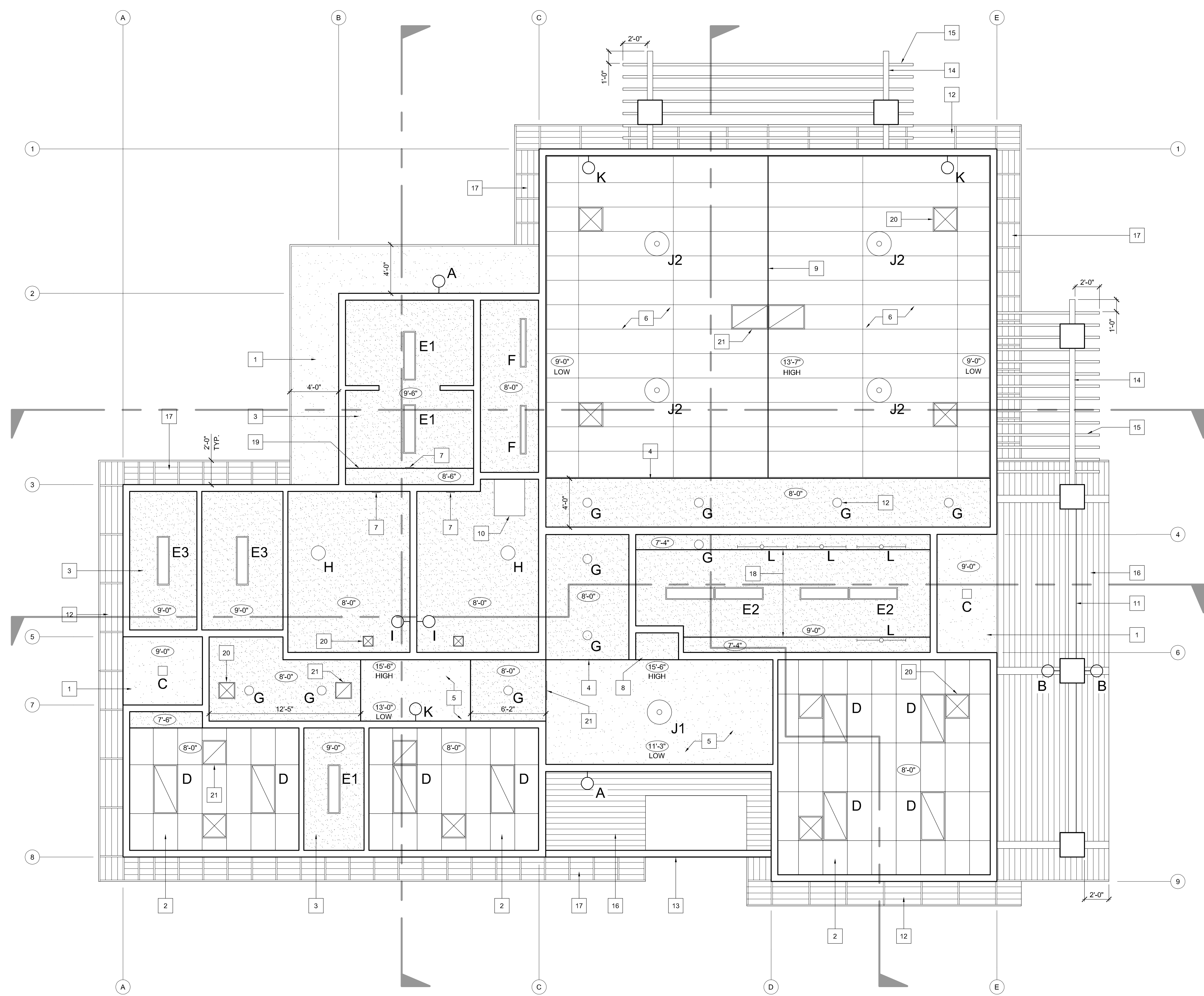
A4.1

LIGHT FIXTURE DESCRIPTIONS:

- A. WALL MOUNTED WET LOCATION WALL PACK.
- B. WALL MOUNTED WET LOCATION SCOFF.
- C. RECESSED DAMP LOCATION DOWNLIGHT.
- D. 2'x4' RECESSED DIRECT/INDIRECT FLUORESCENT.
- E1. 1'x4' SURFACE FLUORESCENT DAMP LOCATION WRAPAROUND.
- E2. 1'x8' SURFACE FLUORESCENT DAMP LOCATION WRAPAROUND.
- E3. 1'x4' SURFACE FLUORESCENT.
- F. 6'x4' SURFACE FLUORESCENT CORRIDOR.
- G. RECESSED COMPACT FLUORESCENT DOWNLIGHT.
- H. CEILING SURFACE FLUORESCENT DRUM.
- I. 4' WALL MOUNTED FLUORESCENT VANITY FIXTURE.
- J1. CEILING SUSPENDED DIRECT/INDIRECT FIXTURE.
- J2. CEILING SUSPENDED DIRECT/INDIRECT FIXTURE, DIMMABLE.
- K. WALL MOUNTED SCOFF, UPLIGHT/DOWNLIGHT.
- L. 4' UNDERCABINET FIXTURE.

REFLECTED CEILING KEYNOTES:

- 1. FLAT STUCCO SOFFIT.
- 2. 2'x4' SUSPENDED ACOUSTIC TILE CEILING.
- 3. GYPSUM BOARD CEILING.
- 4. GYPSUM BOARD SOFFIT AT 8'-0".
- 5. VAULTED GYPSUM BOARD CEILING.
- 6. CATHEDRAL CEILING WITH 2x8' ACOUSTICAL PANELS. SEE DETAILS 41 & 43 / A9.4.
- 7. FLUSH THRU-WALL EXHAUST FAN GRILL.
- 8. 7'-0" GYPSUM BOARD SOFFIT.
- 9. CEILING RIDGE.
- 10. ATTIC ACCESS HATCH WITH INTEGRATED SKYLIGHT.
- 11. HEAVY TIMBER GABLE END TRUSS.
- 12. GABLE END OVERHANG: GROOVE NOTCHED STARTER ROOF SHEATHING AND OUTRIGGERS PAINTED TO MATCH FASCIA.
- 13. EXPOSED WOOD BEAM ABOVE.
- 14. TRELIS SUPPORT BEAM.
- 15. TRELIS RAFTER.
- 16. SLOPING PAINTED STARTER BOARD SOFFIT.
- 17. ROOF EAVE: GROOVE NOTCHED STARTER ROOF SHEATHING AND TRUSS TAILS PAINTED TO MATCH FASCIA.
- 18. SOFFIT ABOVE CABINETS.
- 19. SOFFIT AT 8'-6" TO CONCEAL EXHAUST DUCTS.
- 20. SUPPLY GRILL.
- 21. RETURN GRILL.
- 22. FLUSH THRU-WALL SUPPLY GRILL.



REFLECTED CEILING PLAN
SCALE : 1/4" = 1'-0"
NORTH

\\John\Rolling Hills Acts 0708\Drawings\0 - Drawing Sheets\Architectural\A4.1 - Common Building RCP.dwg, 8/13/2010 1:54:40 PM, P05995