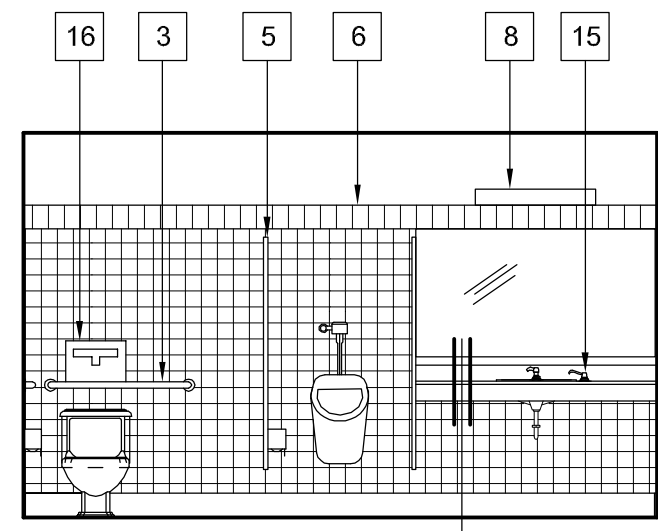
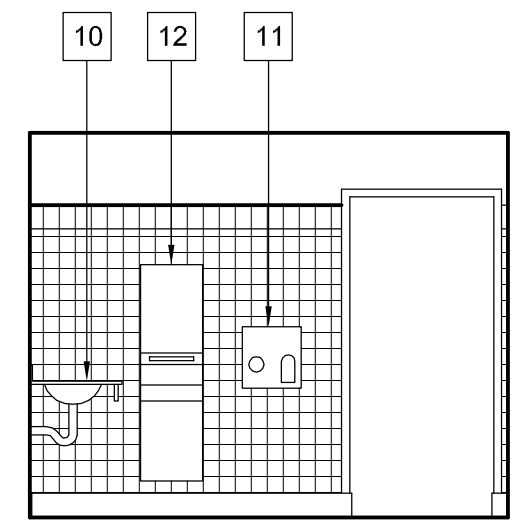


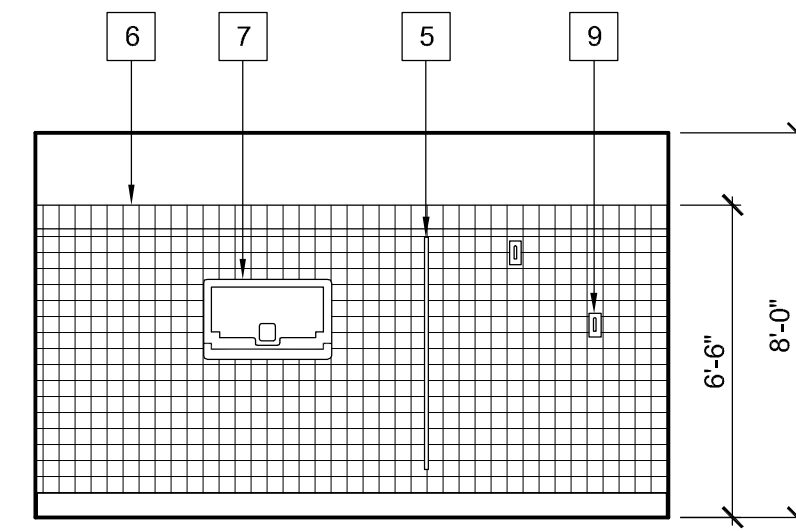
S



W

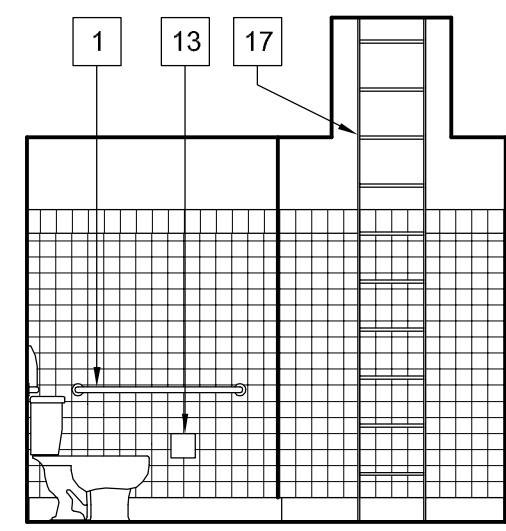


N

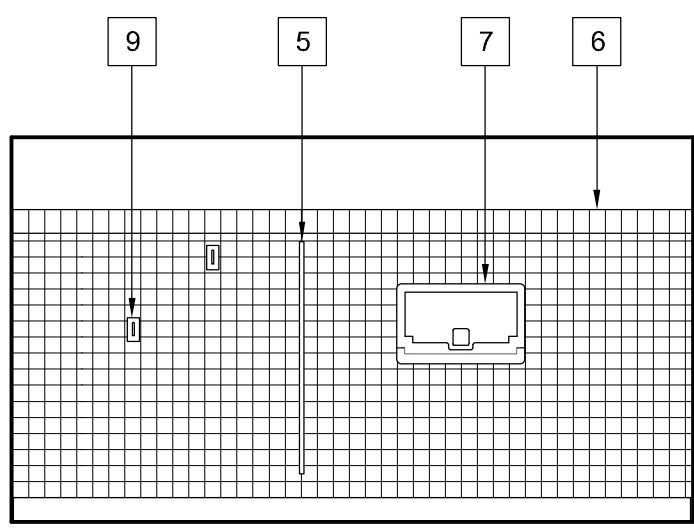


E

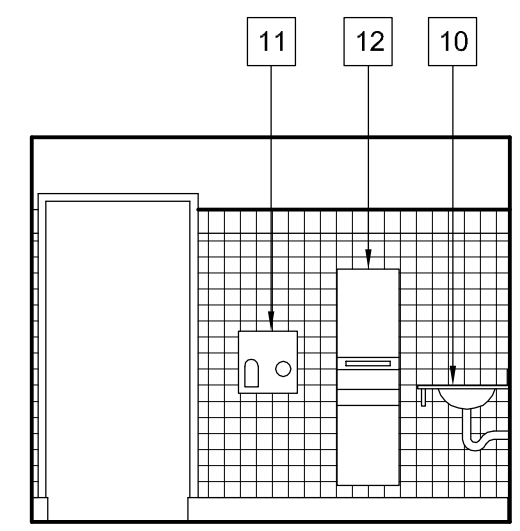
51 MEN'S RESTROOM ELEVATIONS
SCALE : 1/4" = 1'-0"



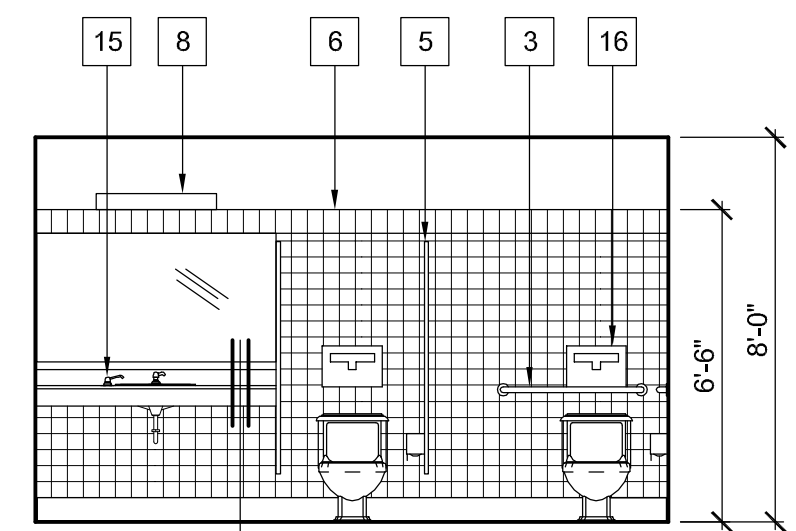
S



W

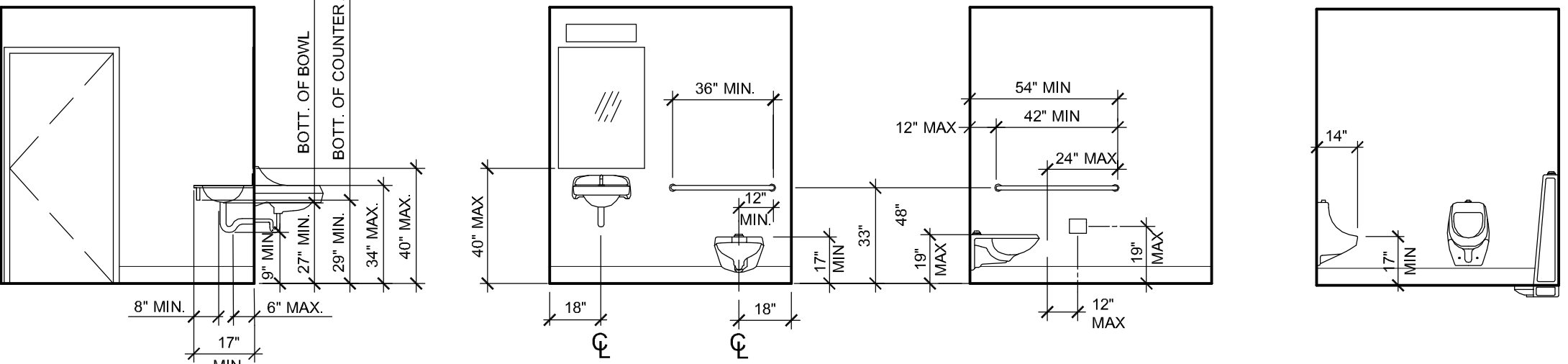
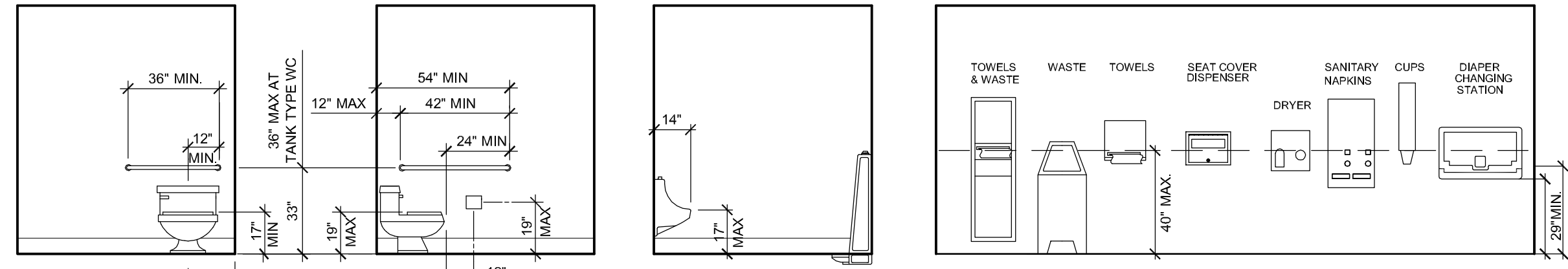


N



E

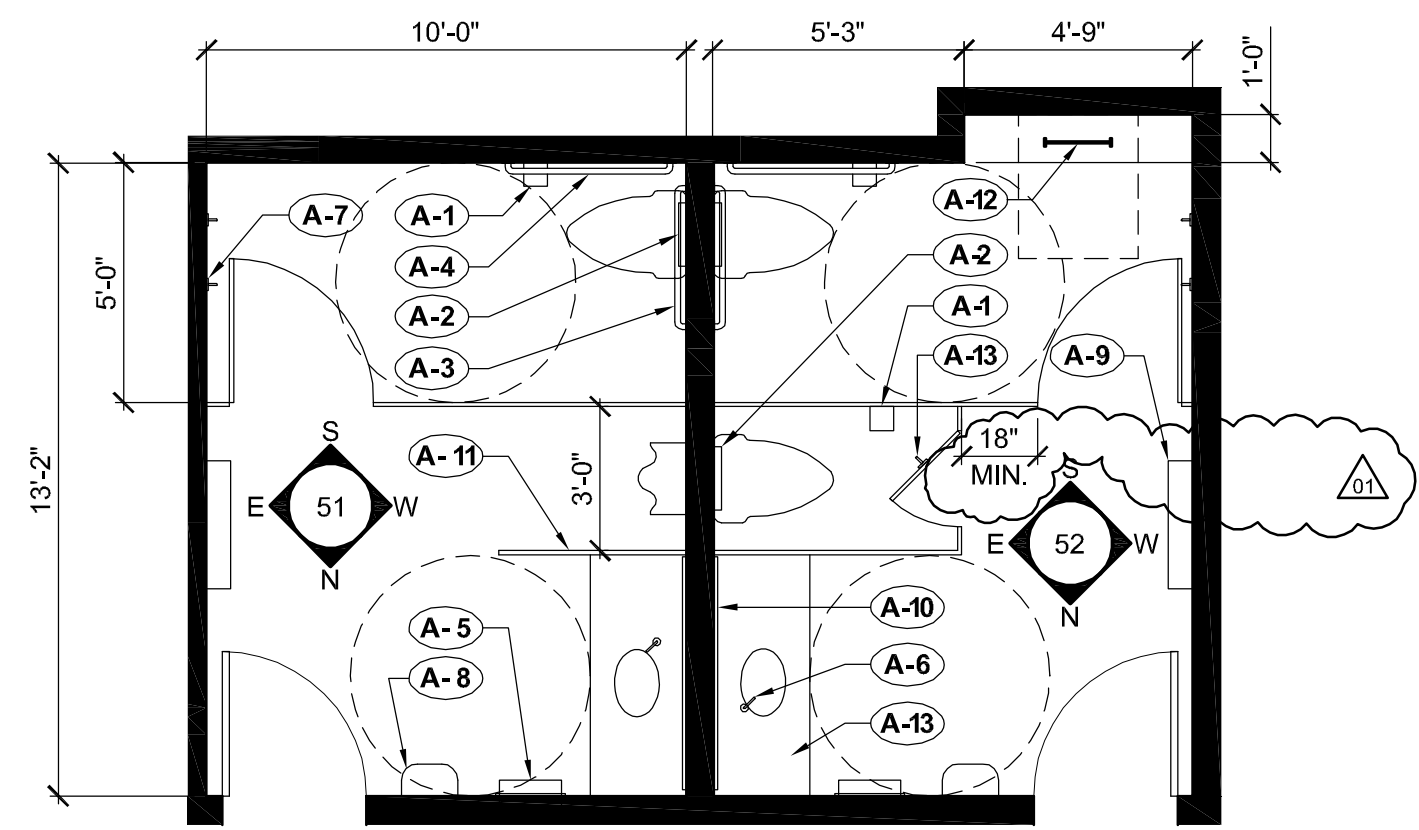
52 WOMEN'S RESTROOM ELEVATIONS
SCALE : 1/4" = 1'-0"



ACCESSIBILITY GENERAL NOTES

- MOUNT MIRROR(S) WITH THE BOTTOM EDGE NO HIGHER THAN 40" ABOVE FLOOR.
- LOCATE OPERABLE PARTS (INCLUDING COIN SLOTS) OF ALL FIXTURES OR ACCESSORIES A MAXIMUM OF 40" ABOVE FLOOR: SOAP DISPENSERS, TOWELS, TOILET SEAT COVERS, AUTO DRYERS, SANITARY NAPKIN DISPENSERS, WASTE RECEPTACLES.
- CONTROLS AND OPERATING MECHANISMS FOR ALL ITEMS SHALL BE OPERABLE WITH ONE HAND AND NOT REQUIRE TIGHT GRASPING, PINCHING, OR TWISTING OF THE WRIST.
- THE FORCE REQUIRED TO ACTIVATE CONTROLS FOR ALL ITEMS SHALL BE 5 LBF. MAX.
- LOCATE COAT HOOKS AND SHELVING WITHIN APPROPRIATE REACH RANGES 48" MAX. ABOVE FLOOR.
- IF MEDICINE CABINETS ARE PROVIDED, AT LEAST ONE SHALL HAVE A USABLE SHELF NO HIGHER THAN 44" ABOVE FLOOR.

ACCESSIBILITY REQUIREMENTS FOR TOILET ROOM FIXTURES AND ACCESSORIES
SCALE : 1/4" = 1'-0"



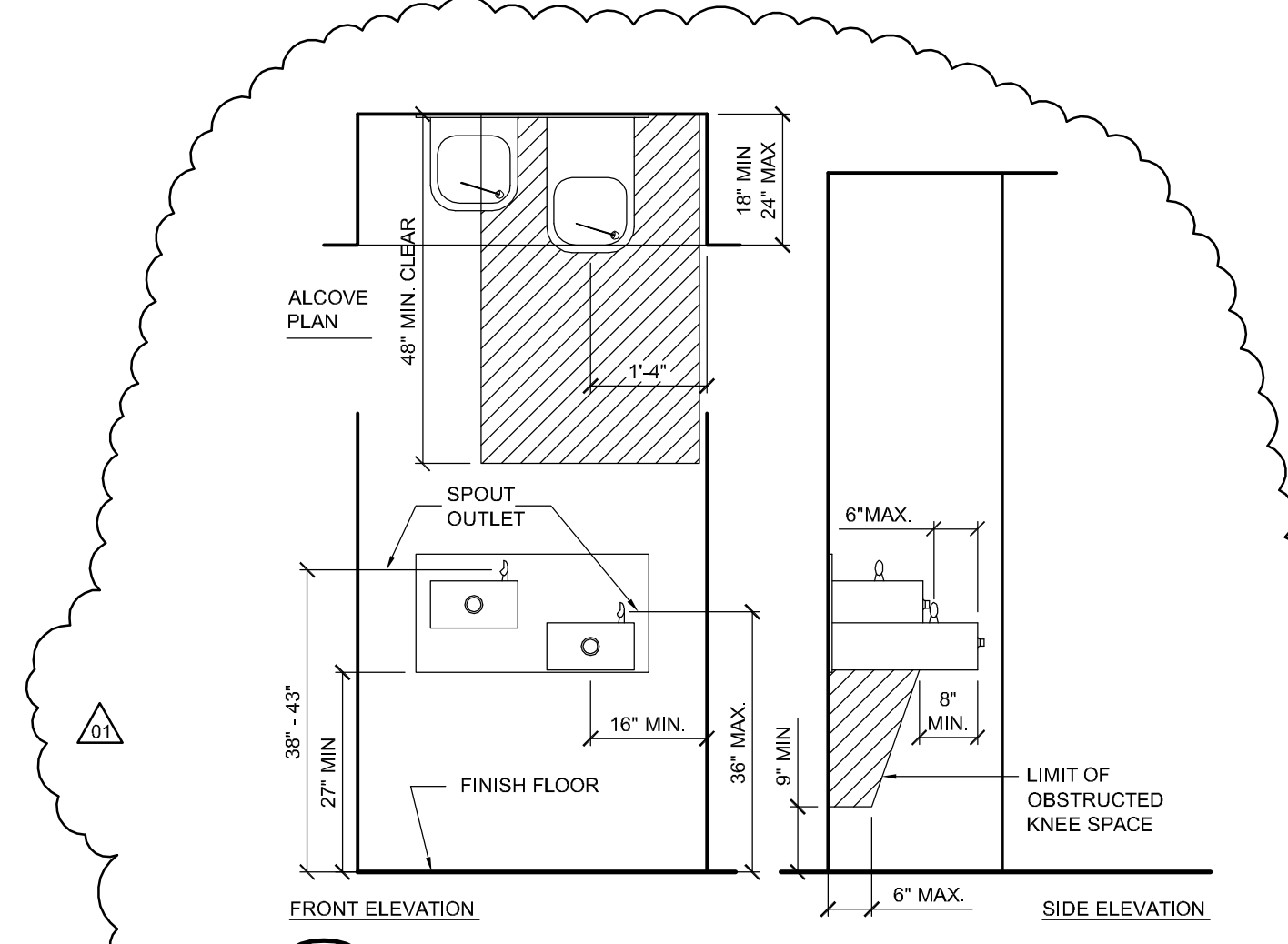
21 RESTROOMS
SCALE : 1/4" = 1'-0"

INTERIOR ELEVATION KEYNOTES

- 42" MIN GRAB BAR PER ACCESSIBILITY REQUIREMENTS. SEE DETAIL 52 / A9.5.
- 6" WALL BASE.
- 36" MIN GRAB BAR PER ACCESSIBILITY REQUIREMENTS.
- CONTINUOUS GRAB BAR PER ACCESSIBILITY REQUIREMENTS.
- PRIVACY PARTITION.
- EDGE OF TILE 48" A.F.F.
- WALL MOUNTED CHANGING TABLE.
- WALL MOUNT LIGHT FIXTURE.
- COAT HOOK. PROVIDE ACCESSIBLE HOOK AT 46"
- CORIAN COUNTER TOP.
- HAND DRYER.
- RECESSED PAPER TOWEL DISPENSER AND WASTE RECEPTACLE.
- TOILET PAPER DISPENSER.
- WALL MOUNTED PAPER TOWEL DISPENSER.
- COUNTER MOUNTED SOAP DISPENSER.
- SEAT COVER DISPENSER.
- ROOF ACCESS LADDER. SEE DETAILS 44 & 54 / A9.3.
- THE INSIDE AND OUTSIDE OF THE COMPARTMENT DOOR SHALL BE EQUIPPED WITH A LOOP OR U-SHAPED HANDLE IMMEDIATELY BELOW THE LATCH. THE LATCH SHALL BE FLIP-OVER STYLE. SLIDING OR OTHER HARDWARE NOT REQUIRING THE USER TO GRASP OR TWIST. 2007 CBC SECTION 1127A.2.1 (5.3).

RESTROOM ACCESSORIES

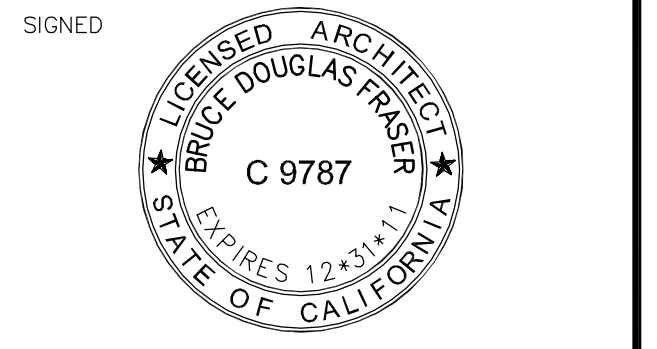
- A-1 TOILET PAPER DISPENSER.
- A-2 SEAT COVER DISPENSER.
- A-3 36" SIDE OF GRAB-BAR PER ACCESSIBILITY REQUIREMENTS.
- A-4 54" SIDE OF GRAB-BAR PER ACCESSIBILITY REQUIREMENTS.
- A-5 RECESSED PAPER TOWEL DISPENSER AND WASTE RECEPTACLE. SANITARY NAPKIN DISPOSAL CONTAINER.
- A-6 COUNTER MOUNTED SOAP DISPENSER.
- A-7 (2) COAT HOOKS. ONE ACCESSIBLE HOOK MOUNTED AT 46".
- A-8 HAND DRYER.
- A-9 WALL MOUNTED CHANGING TABLE.
- A-10 5' W x 2'-8" H MIRROR WITH BOTTOM EDGE MOUNTED AT 40" A.F.F.
- A-11 PRIVACY PARTITION.
- A-12 ROOF ACCESS LADDER.



14 ACCESSIBLE D.F.
1/2" = 1'-0"



PROJECT MANAGER	BDP
DRAWN BY	DDL
DATES	DESIGN DEVELOPMENT 4/15/10
	FIRST SUBMITTAL 6/02/10
	PLAN CHECK 1 8/16/10



The use of these plans and specifications shall be restricted to the original site for which they were prepared and publication thereof is expressly limited to such use. Reproduction or publication by any method, in whole or in part, is prohibited. Title to these plans and specifications remain with the architect without prejudice. Visual contact with these plans and specifications shall constitute prima facie evidence of the acceptance of these restrictions.

SHEET TITLE
ENLARGED RESTROOM PLANS

\\John\Rolling Hills Acts 0708\Drawings\0 - Drawing Sheets\Architectural\A7.2 - ENLARGED RESTROOM PLANS.dwg, 8/16/2010 9:51:41 AM, PDF995