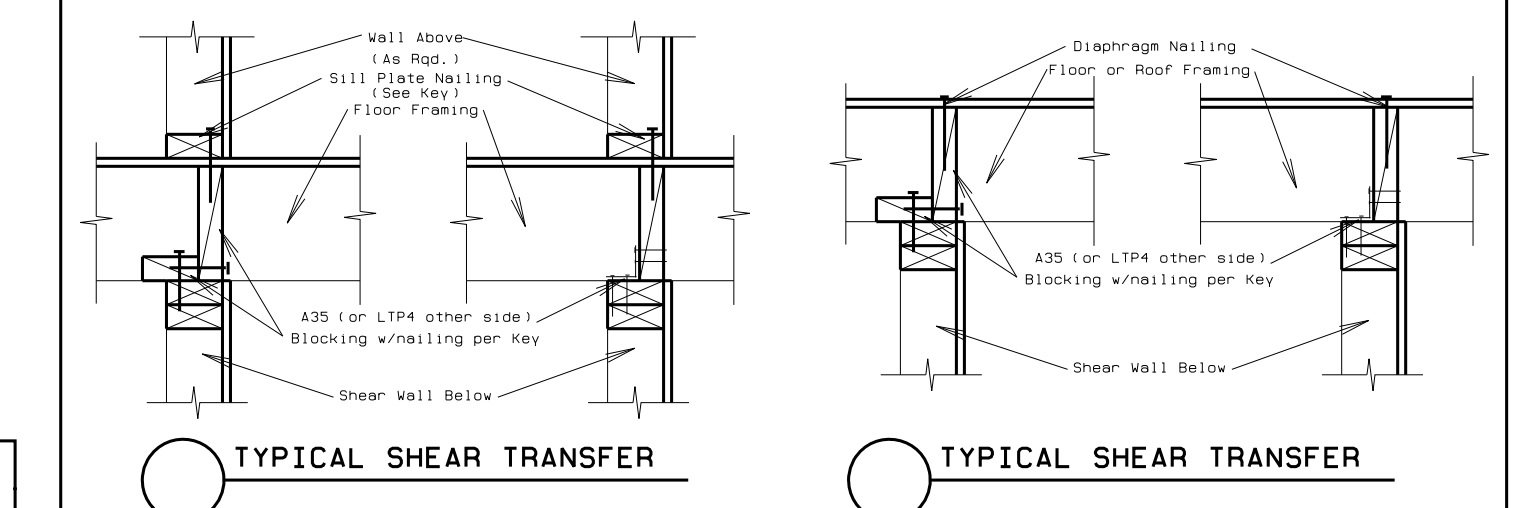


SHEAR WALL KEY

STRUCTURAL PANEL Shear Key Designation Length of Shear Wall	Allow. v (plf)	Alternative Bottom Plate Connection		Anchor Bolts (Chart)	Cl to Top Plate	
		SOS1/4 X 1/2 Spacing	16d Spacing		A35	LTP4
1 3/8" w/8d's @ 6"/12" oc	220	12" oc	9" oc	A	24" oc	24" oc
2 3/8" w/8d's @ 4"/12" oc	320	8" oc	6" oc	B	16" oc	24" oc
3 3/8" w/8d's @ 3"/12" oc xx	410	6" oc	5" oc	C	12" oc	18" oc
4 15/32" w/8d's @ 6"/12" oc	260	12" oc	8" oc	B	16" oc	24" oc
5 15/32" w/8d's @ 4"/12" oc xx Stagger	380	8" oc	5" oc	C	12" oc	18" oc
6 15/32" w/8d's @ 3"/12" oc xx Stagger	490	6" oc	4" oc	C	8" oc	16" oc
7 15/32" w/8d's @ 2"/12" oc xx Stagger	640	4" oc	3" oc	D	8" oc	12" oc
8 15/32" w/10d's @ 6"/12" oc xx Stagger	310	10" oc	6" oc	B	15" oc	24" oc
9 15/32" w/10d's @ 4"/12" oc xx Stagger	460	6" oc	4" oc	C	8" oc	16" oc
10 15/32" w/10d's @ 3"/12" oc xx Stagger	600	5" oc	3" oc	D	8" oc	12" oc
11 15/32" w/10d's @ 2"/12" oc xx Stagger	770	4" oc	2.1/2" oc	E	6" oc	8" oc
12 19/32" w/10d's @ 6"/12" oc xx Stagger	340	9" oc	6" oc	C	12" oc	18" oc
13 19/32" w/10d's @ 4"/12" oc xx Stagger	510	6" oc	4" oc	D	8" oc	12" oc
14 19/32" w/10d's @ 3"/12" oc xx Stagger	665	4" oc	3" oc	E	8" oc	12" oc
15 19/32" w/10d's @ 2"/12" oc xx Stagger	870	3" oc	2.1/4" oc	F	6" oc	8" oc

NOTES:
 * = Stud spacing @ 16" oc, use values for 15/32" panel w/8d's
 All edges require blocking and edge nailing.
 ** = Min. 3" nominal framing members required at adjoining panel edges.
 Where panels are applied to both sides of the wall, double the plate nailing, clips & anchor bolts (Stagger the nails to avoid splitting)
 *** = 3x nominal Foundation Sill Plate where allowable shear exceeds 350 plf, adjust anchor bolt length for added depth of plate (or decrease spacing of anchor bolts by 1/2" w/ 2x sill plate where shear less than 600 plf)

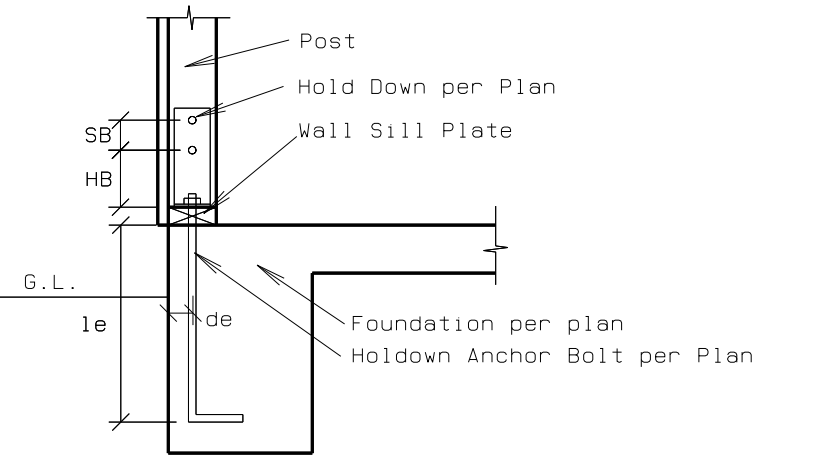


ANCHOR BOLTING 3"x 3"x 1/4" Washers Required

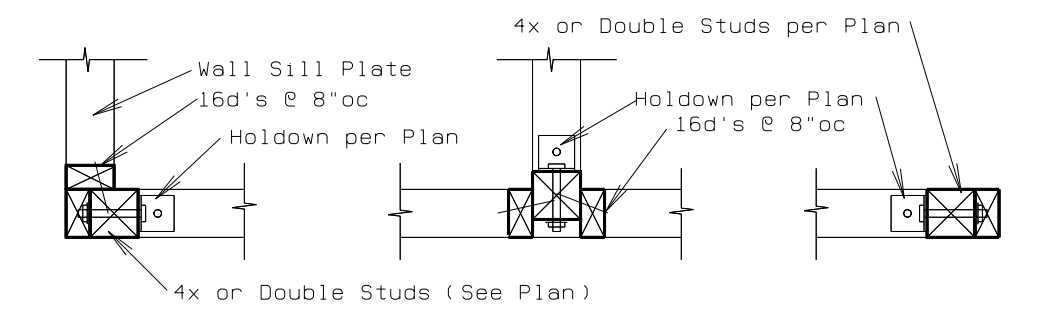
Panel	INTO CONCRETE		INTO MASONRY	
	Panel One Side	Panel Both Sides	Panel One Side	Panel Both Sides
A	5/8" @ 48" oc	5/8" @ 32" oc	5/8" @ 48" oc	5/8" @ 32" oc
B	5/8" @ 48" oc	5/8" @ 24" oc	5/8" @ 32" oc	5/8" @ 16" oc
C	5/8" @ 32" oc	5/8" @ 16" oc	5/8" @ 24" oc	3/4" @ 16" oc
D	5/8" @ 24" oc	3/4" @ 16" oc	5/8" @ 16" oc	3/4" @ 16" oc
E	3/4" @ 32" oc	3/4" @ 16" oc	3/4" @ 32" oc	3/4" @ 16" oc
F	3/4" @ 24" oc	3/4" @ 12" oc	3/4" @ 24" oc	3/4" @ 12" oc



- SHEAR PLAN NOTES:**
 1-U2 = HDU2-SDS2.5 to Db1. or 4x Stud w/SSTB20 AB
 (U2) indicates corner detail for holddown.
 2-See Roof Framing Plan for Drag Ties
 3-All Shear Wall Plywood to Extend to Roof unless details are provided for shear transfer at truss.
 4-All Line 5 to have shear plywood applied full length of wall line above openings.
 5- CS1 = CS20 Strap @ Header Height to Wall Blocking over ply Full Length of Wall.



Typical Holddown Detail Section
3/4" = 1'-0"



CORNER INTERIOR END WALL
Typical Holddown Detail Plan
3/4" = 1'-0"

ROLLING HILLS APARTMENTS
Templeton, CA

STEPHEN MACIE, P.E.
 CALIF. CE: 28063. HI. SE: 5974
 1009 Marro St. #201
 San Luis Obispo, CA 93401
 PH: 805-541-3837
 Email: ECVAL3EAOL.COM



Rev. 8/6/2010

The use of these plans and specifications shall be restricted to the original site for which they were prepared and publication thereof is expressly limited to such use. Reproduction or publication by any method, in whole or in part, is prohibited. Title to these plans and specifications remain with the engineer or architect without prejudice. Visual contact with these plans and specifications shall constitute prima facie evidence of the acceptance of these restrictions.
 Written dimensions on these drawings shall have precedence over scaled dimensions. Contractors shall verify and be responsible for all dimensions and existing conditions on the job and shall report any discrepancies to the engineer or the architect for resolution prior to commencing work.

SHEET TITLE:
**SHEAR WALL PLAN
COMMON BUILDING**

SHEET #:
S2.3