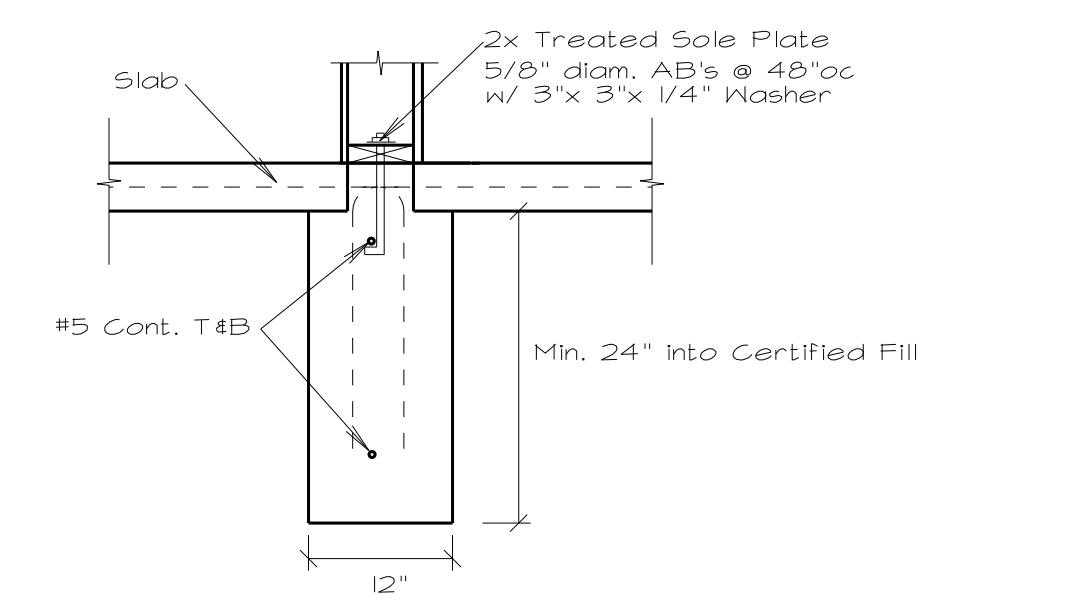
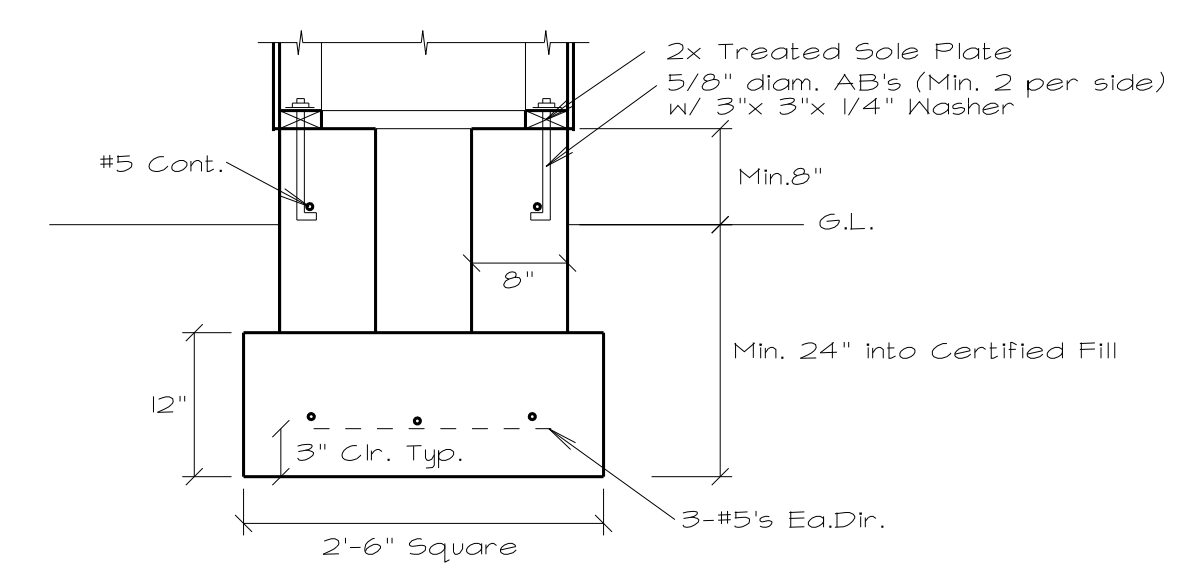


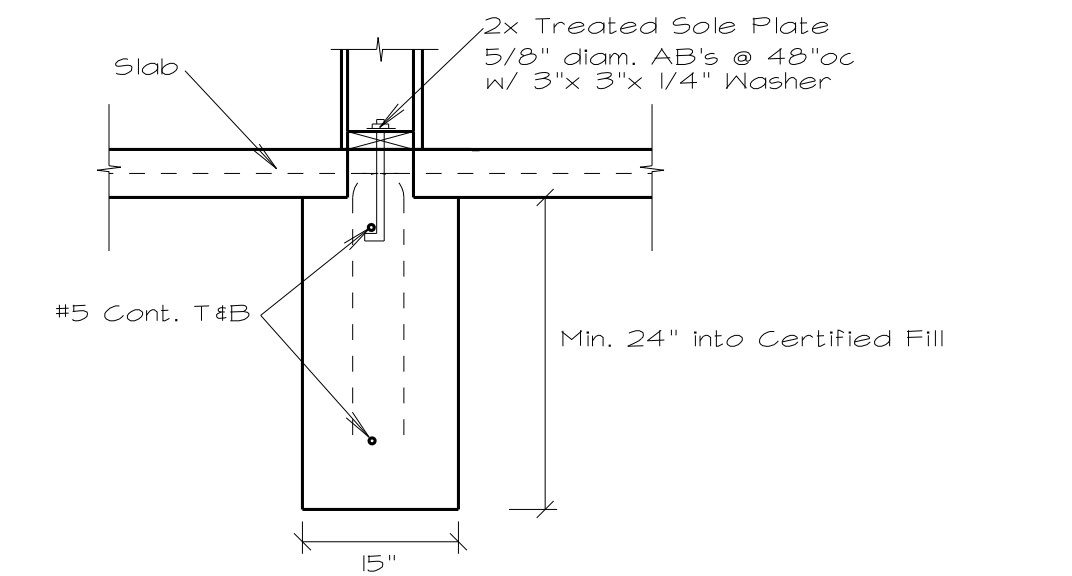
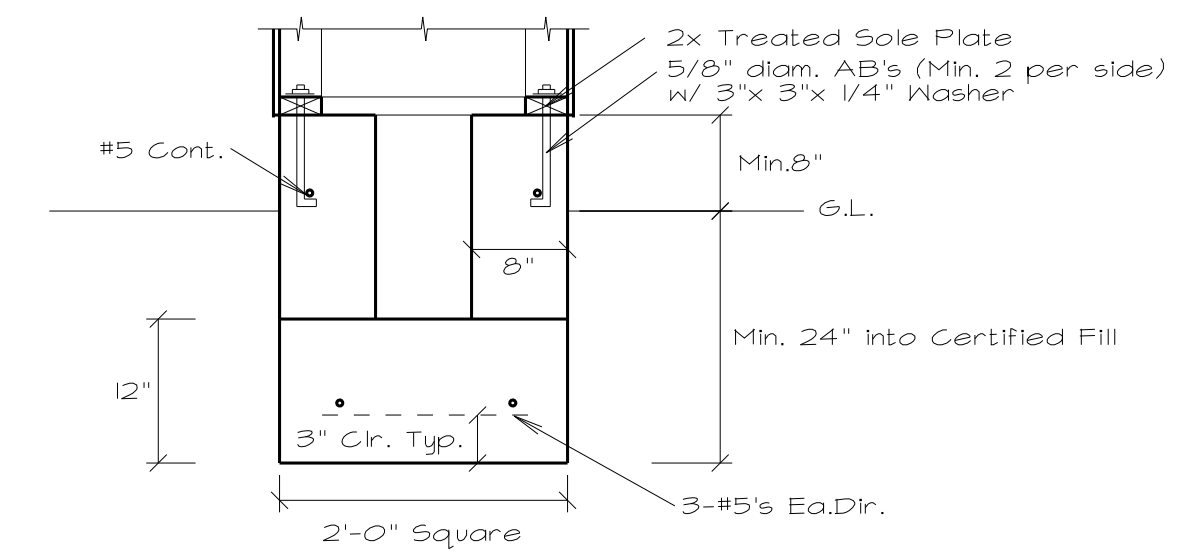
F1 PERIMETER FOOTING
3/4" = 1'-0"

F1a PERIMETER FOOTING WITH CURB
3/4" = 1'-0"
NOTE: Extend Holddown Anchor Bolts to Bottom of Footing Use Threaded Rod w/ Nut-Washer-Nut at end in Footing



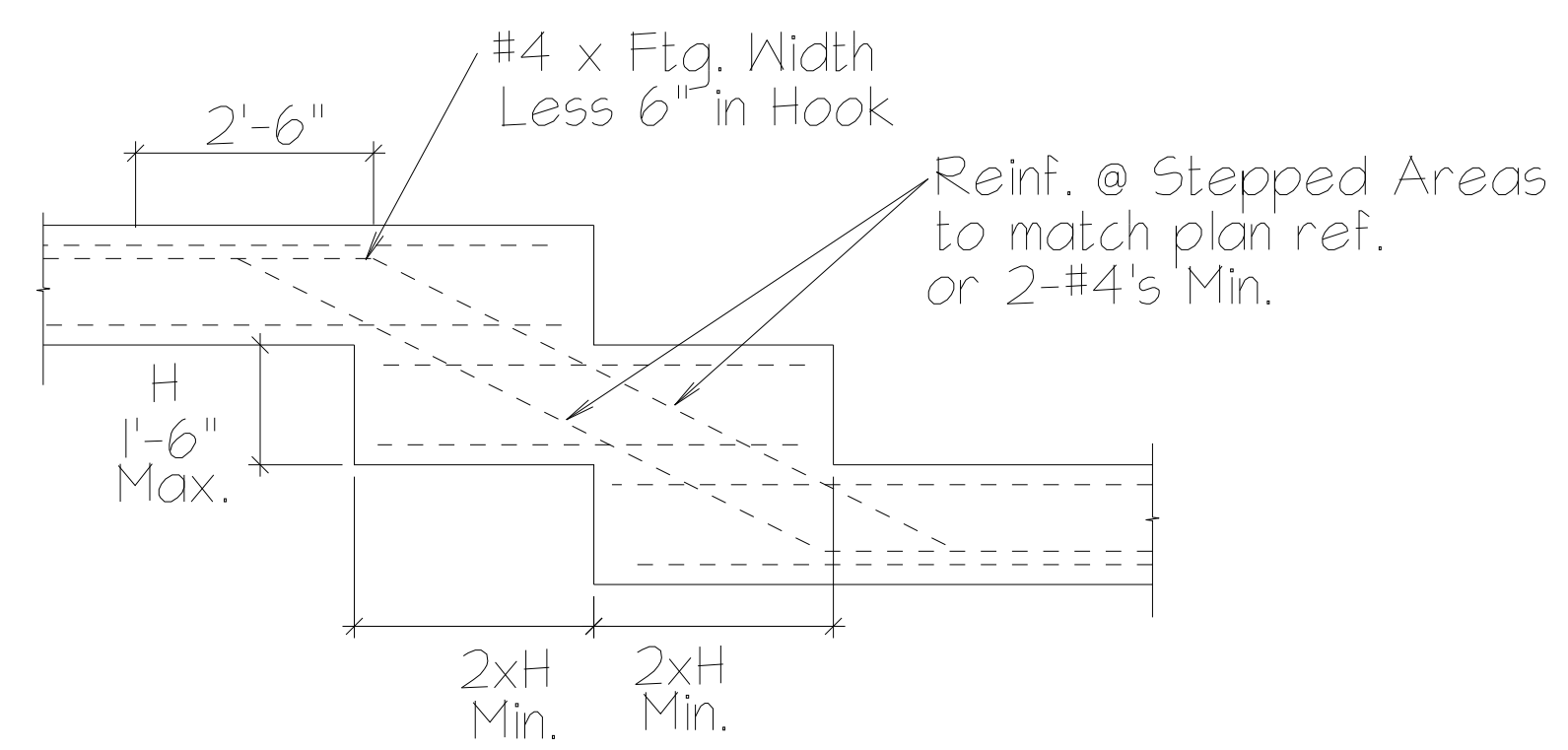
P1 FOOTING FOR PORCH COLUMN
3/4" = 1'-0"

F2 INTERIOR FOOTING
3/4" = 1'-0"

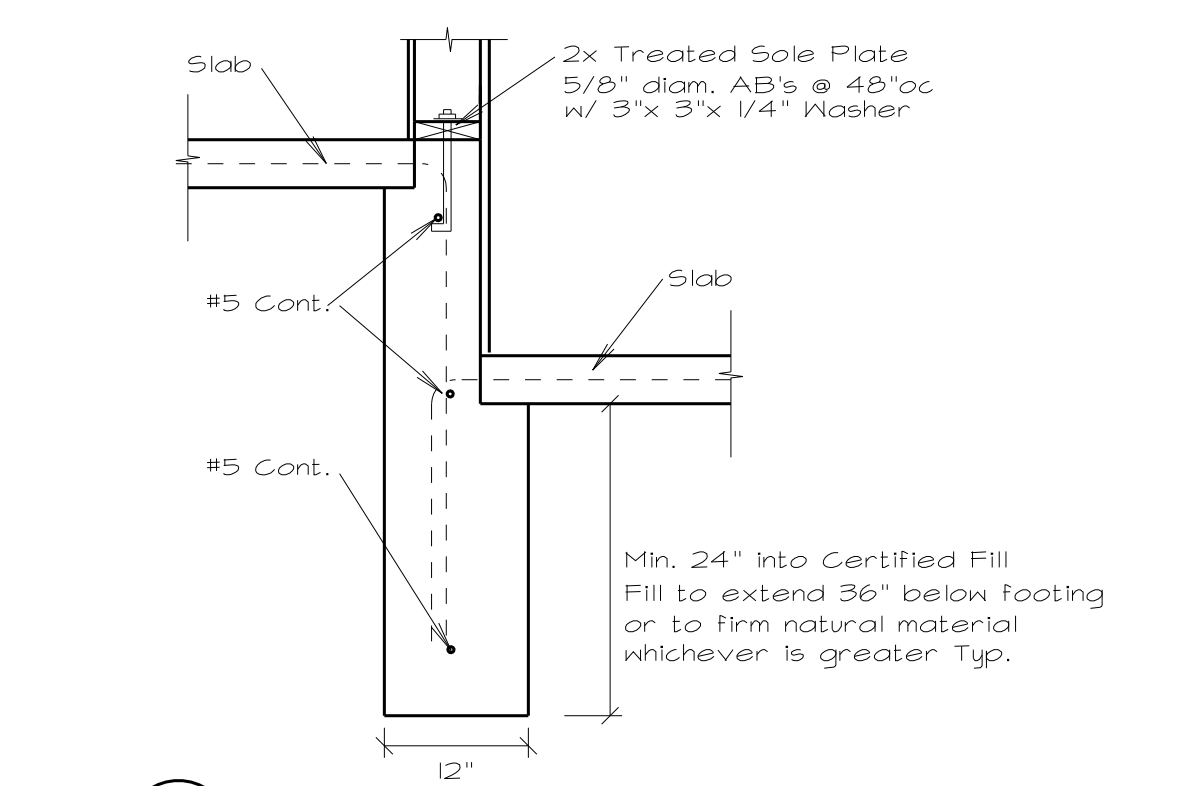


P2 FOOTING FOR TRELLIS COLUMN
3/4" = 1'-0"

F3 INTERIOR FOOTING @ MECHANICAL DECK
3/4" = 1'-0"



TYPICAL STEPPED FOOTING
See Footing Plan & Details for size & Reinforcement



F4 INTERIOR FOOTING LAUNDRY ROOM
3/4" = 1'-0"

STEPHEN MACIE, P.E.
CALIF. CE: 28063, HI. SE: 5974
1009 Manro St., #201
San Luis Obispo, CA 93401
PH: 805-541-3837
Email: ECVAl3EAOL.COM



Rev. 8/5/2010

The use of these plans and specifications shall be restricted to the original site for which they were prepared and publication thereof is expressly limited to such use. Reproduction or publication by any method, in whole or in part, is prohibited. Title to these plans and specifications remain with the engineer or architect without prejudice. Visual contact with these plans and specifications shall constitute prima facie evidence of the acceptance of these restrictions.

Written dimensions on these drawings shall have precedence over scaled dimensions. Contractors shall verify and be responsible for all dimensions and existing conditions on the job and shall report any discrepancies to the engineer or the architect for resolution prior to commencing work.

SHEET TITLE:
**FOUNDATION DETAILS
COMMON BUILDING**

SHEET #:
S3.1