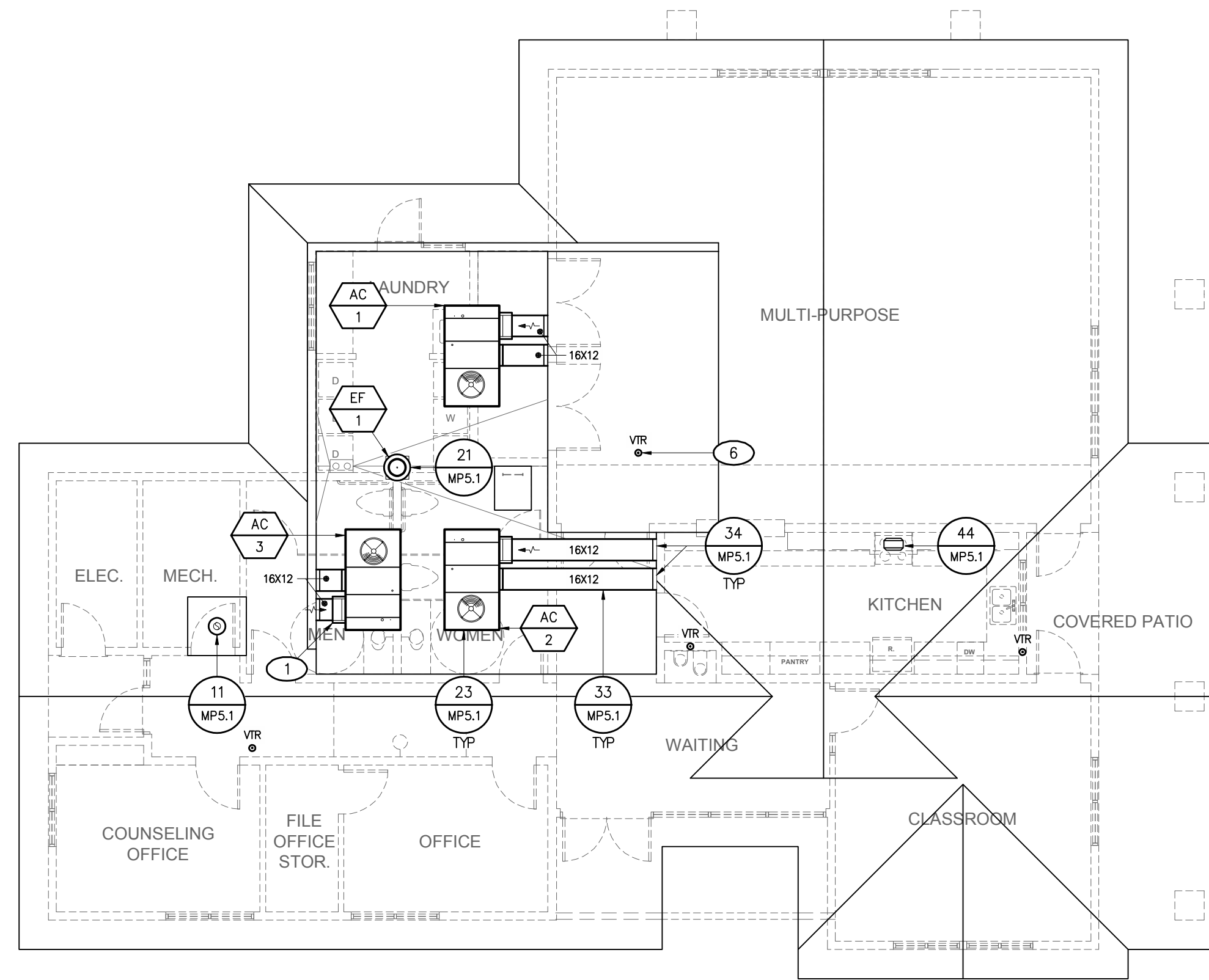


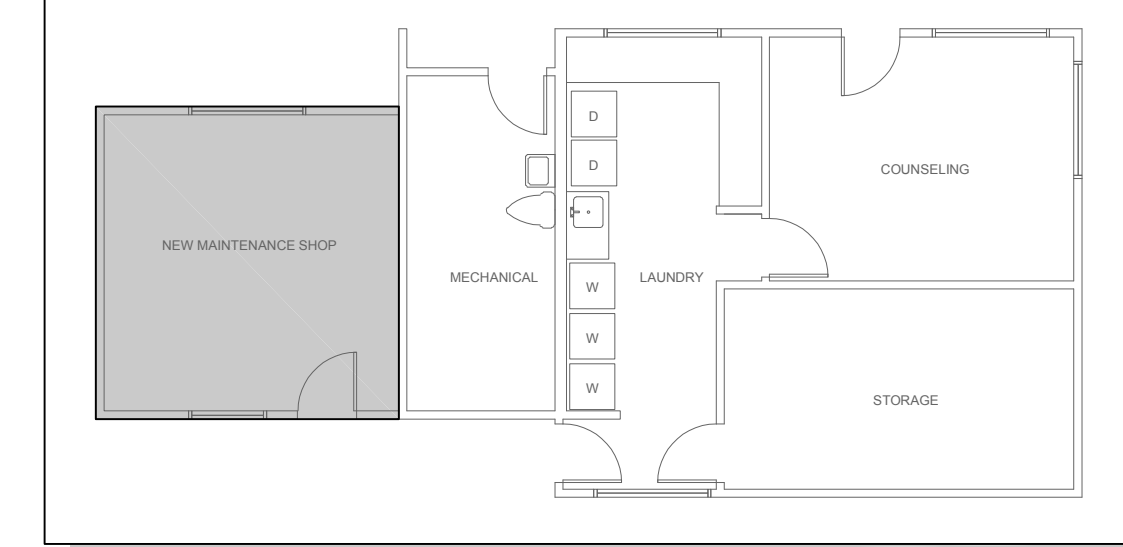
MECHANICAL - SHOP ADDITION, ROOF PLAN
1/8" = 1'-0"



MECHANICAL - COMMONS BUILDING, ROOF PLAN
1/8" = 1'-0"

SHOP ADDITION KEY PLAN

WORK LOCATED IN SHADED AREA - N.T.S.



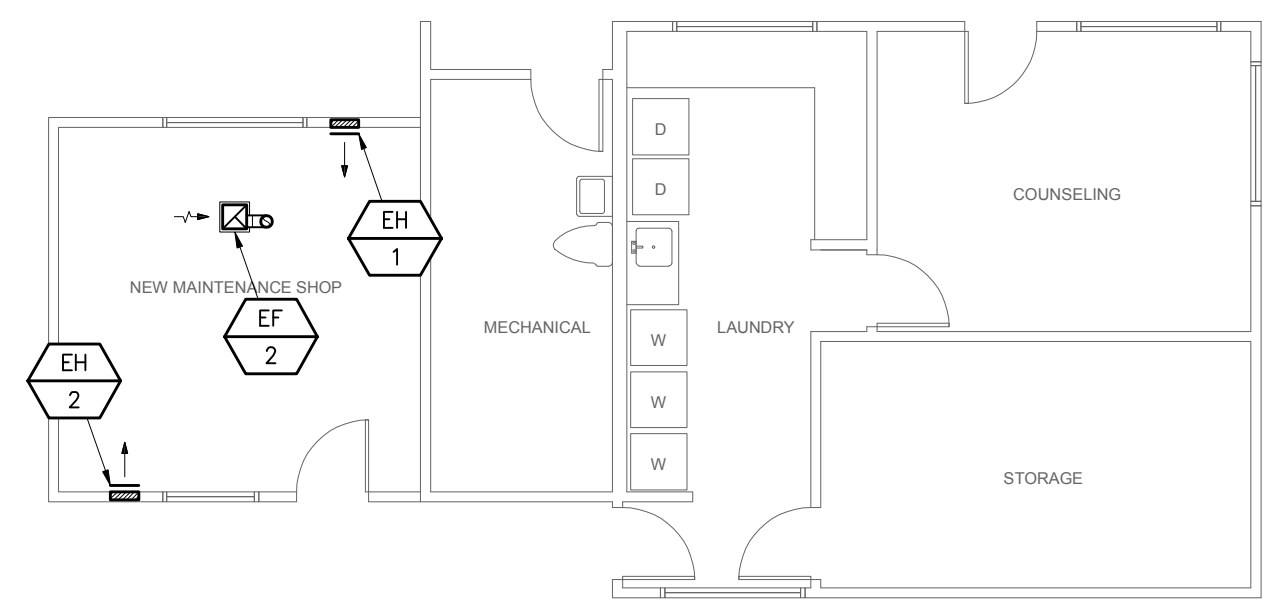
COMBUSTION AIR CALCULATIONS

EQUIPMENT	TOTAL INPUT (BTU/H)	REQUIRED NET FREE AREA	LOUVER SIZE	PROVIDED NET FREE AREA (44%NFA)
CLOTHES DRYER(x3)	105,000	35.0 IN ²	18"x12"	63.3 IN ²

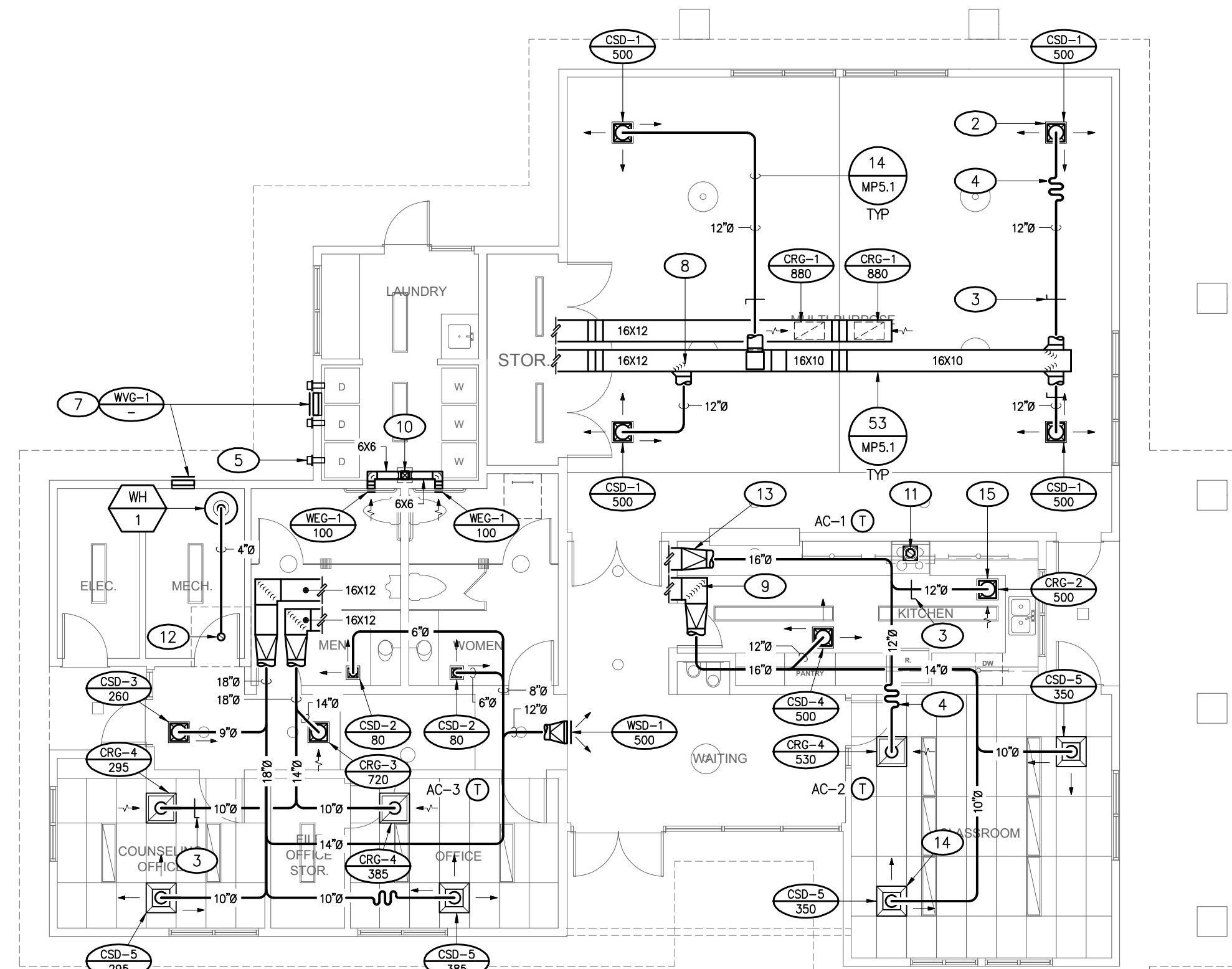
REQUIRED NFA BASED ON 1 IN² PER 3 MBTU/H INPUT (CMC 2007, 701.4.2)
SEE 'AIR TERMINAL SCHEDULE', SHEET MP3.1 FOR ADDITIONAL LOUVER DATA

REFERENCE NOTES

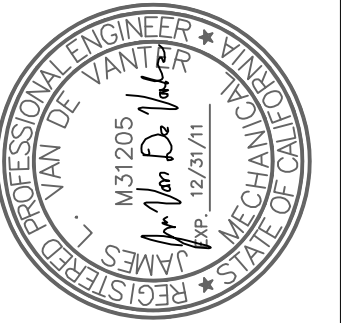
- OUTSIDE AIR INTAKE. MAINTAIN 10' CLEAR FROM ALL PLUMBING VENTS AND FLUES. MAINTAIN 3' CLEAR FROM ALL ENVIRONMENTAL AIR EXHAUST
- ALL AIR REGISTERS IN MULTI-PURPOSE ROOM SHALL BE CENTERED IN 2'x8' ACOUSTICAL CEILING TILES BY MECHANICAL CONTRACTOR
- VOLUME DAMPER AT BRANCH DUCT. TYPICAL ALL BRANCH DUCTS, SUPPLY, RETURN, & EXHAUST. SEE DETAIL 43/MP5.1
- FLEX DUCT AT END RUN CONDITION. SEE DETAIL 24/MP5.1 - TYPICAL
- 4" DRYER EXHAUST DUCTWORK TO EXTERIOR WALL CAP TERMINATION. INSTALL PER MANUFACTURER'S GUIDELINES. SEE DETAIL 13/MP5.1 - TYPx3
- PLUMBING VENT TERMINATIONS SHOWN HERE FOR OUTSIDE AIR INTAKE CLEARANCE REFERENCE ONLY
- WALL VENTILATION LOUVER (WVL-1) PROVIDED FOR WATER HEATER & CLOTHES DRYER COMBUSTION AIR SUPPLY (ONE PERMANENT OPENING METHOD). THE LOUVER SHALL BE INSTALLED AT A MAXIMUM OF 12" BELOW THE TOP OF THE ENCLOSURE. REFER TO THE 'COMBUSTION AIR CALCULATIONS' TABLE, THIS SHEET & THE 'AIR TERMINAL SCHEDULE', SHEET MP2.1
- EXTRACTOR - TYPICAL
- TURNING VANE - TYPICAL
- 6X6 EXHAUST DUCT UP THROUGH ROOF TO UNIT CONNECTION SIZE PLENUM DROP
- 7"Ø DOMESTIC RANGE EXHAUST DUCT UP THROUGH ROOF TO T-TOP TERMINATION
- 4" CLASS 'B' WATER HEATER FLUE UP THROUGH ROOF, BY MC
- SQUARE TO ROUND ADAPTOR PER SMACNA STANDARDS. SEE DETAIL 51/MP5.1 - TYPICAL
- T-BAR GRILLE CONNECTION. SEE DETAIL 42/MP5.1 - TYPICAL
- HARD LID GRILLE CONNECTION. SEE DETAIL 41/MP5.1 - TYPICAL



MECHANICAL - SHOP ADDITION, ROOF PLAN
1/8" = 1'-0"



MECHANICAL - COMMONS BUILDING, FLOOR PLAN
1/8" = 1'-0"



PROJECT TITLE:
NEW COMMON BUILDING
ROLLING HILLS APARTMENTS
TEMPLETON, CA

CLIENT:
FRASER SEIPLE ARCHITECTS
5770 S LOS ANGELES BLVD
SAN LUIS OBISPO, CA
(805) 544-6161

MECHANICAL FLOOR & ROOF PLANS

DATE	REMARKS
04.15.2010	DESIGN DEVELOPMENT
05.17.2010	FIRST SUBMITTAL
08.18.2010	PLAN CHECK 1

PLOT DATE:
8/16/2010 8:00 AM

DRAWN BY:
TDR

JVA JOB #
M10024

SHEET
MECHANICAL FLOOR & ROOF PLANS
MP3.1