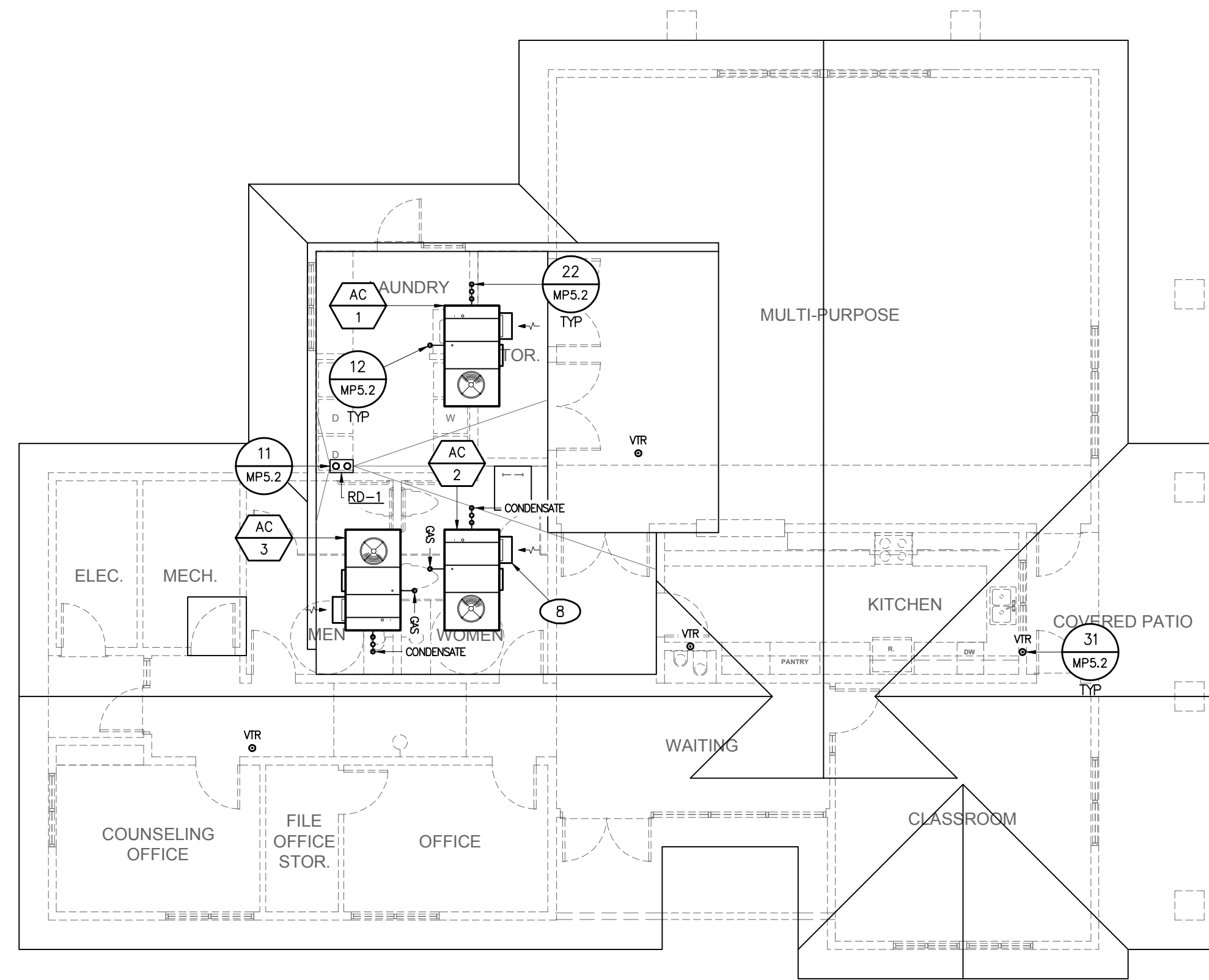
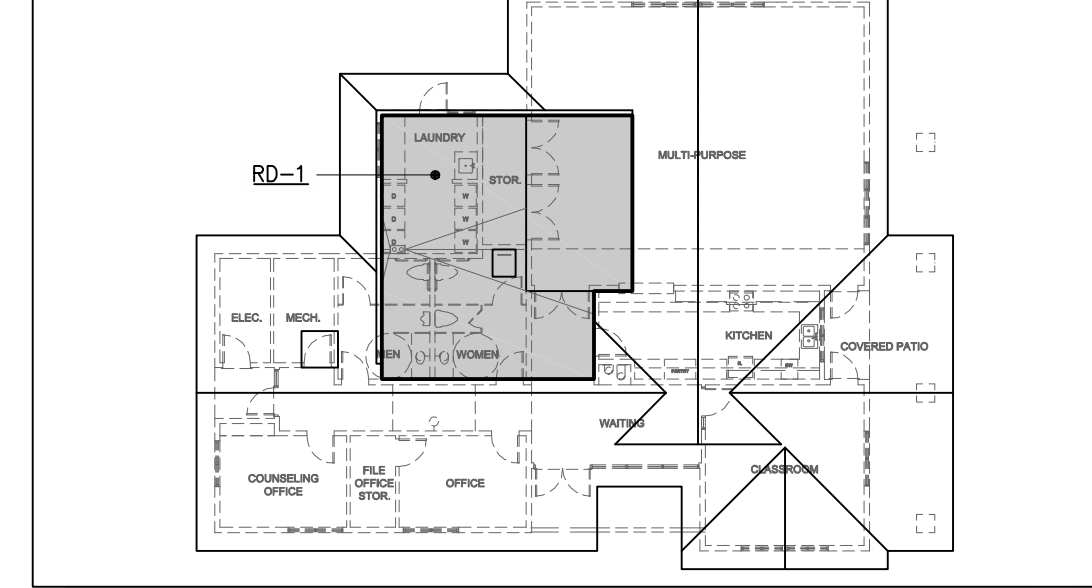


**ROOF DRAIN SIZING**

ROOF DRAIN	ROOF AREA SERVED	GPM PER SF	MAX. FLOW RATE	MINIMUM REQ'D SLOPE	REQUIRED DRAIN SIZE		
RD-1	750 SF	0.016	12.0 GPM	1/4" PER FOOT	3"		
MAXIMUM PIPE SIZE							
MAXIMUM ALLOWABLE FLOW @ 1/4" PER FOOT SLOPE		3"	48.0 GPM	4"	110.0 GPM	5"	196.0 GPM
PER TABLE 11-2, 2007 CPC							
STORM DRAINAGE 60 MINUTE DURATION, 100 YEAR RETURN							
TEMPLETON, CA							
PER APPENDIX 'D', 2007 CPC							

ROOF PLAN N.T.S.



**PLUMBING - ROOF PLAN**

1/8" = 1'-0"

**NOTE**

← INDICATES DIRECTION OF WASTE PIPING SLOPE - MINIMUM 1/4" PER FOOT

**NOTE**

IF NOT INDICATED ON PLAN BRANCH LINE PIPE SIZES TO FIXTURES SHALL BE AS FOLLOWS:

FIXTR.	CW	HW	W	V
WC-1	3/4"	1"	3"	2"
WC-2	3/4"	1"	3"	2"
URN-1	1/2"	1"	2"	1 1/2"
LAV-1	3/4"	1"	2"	1 1/2"
WS-1	3/4"	1"	2"	1 1/2"
KS-1	3/4"	1"	2"	1 1/2"
DF-1	3/4"	1"	2"	1 1/2"
FD-1	3/4"	1"	2"	1 1/2"
CLOTHES WASHER	3/4"	1"	3"	2"

**UTILITY LINE SIZING**

**DOMESTIC WATER SERVICE**

NEW WSFU	EXISTING WSFU	TOTAL WSFU	TOTAL GPM	FLUSH TANK/ FLUSH VALVE	METER SIZE	PIPE SIZE
33.5	-	33.5	22.0	TANK	3/4"	1-1/4"

REGULATED PRESSURE	AVAILABLE PRESSURE (60' ELEVATION LOSS)	REQ'D RESIDUAL PSI AT FURTHEST FIXTURE	TOTAL DEVEL'D LENGTH [D+(Dx.25)]	ALLOWABLE FRICTION LOSS
60.0psi	58.0psi	20.0	95'	40psi/100'

MAXIMUM ALLOWABLE WSFU (TYPE 'L' COPPER, FLUSH TANK)

PIPE SIZE	1/2"	3/4"	1"	1-1/4"	1-1/2"	2"	2-1/2"
COLD WATER (MAX. 5 FPS)	7	15	29	56	97	245	460
HOT WATER (MAX. 5 FPS)	3	8	18	28	45	115	241

SIZED PER APPENDIX 'A', 2007 CPC

**GAS SERVICE**

SPACE BTU	WATER BTU	OTHER BTU	TOTAL BTU	TOTAL CFH	FURTHEST DISTANCE FROM METER	PIPE SIZE
225,000	75,100	170,000	470,100	470.1	50'	1-1/2"

SIZED PER TABLE 12-7, 2007 CPC

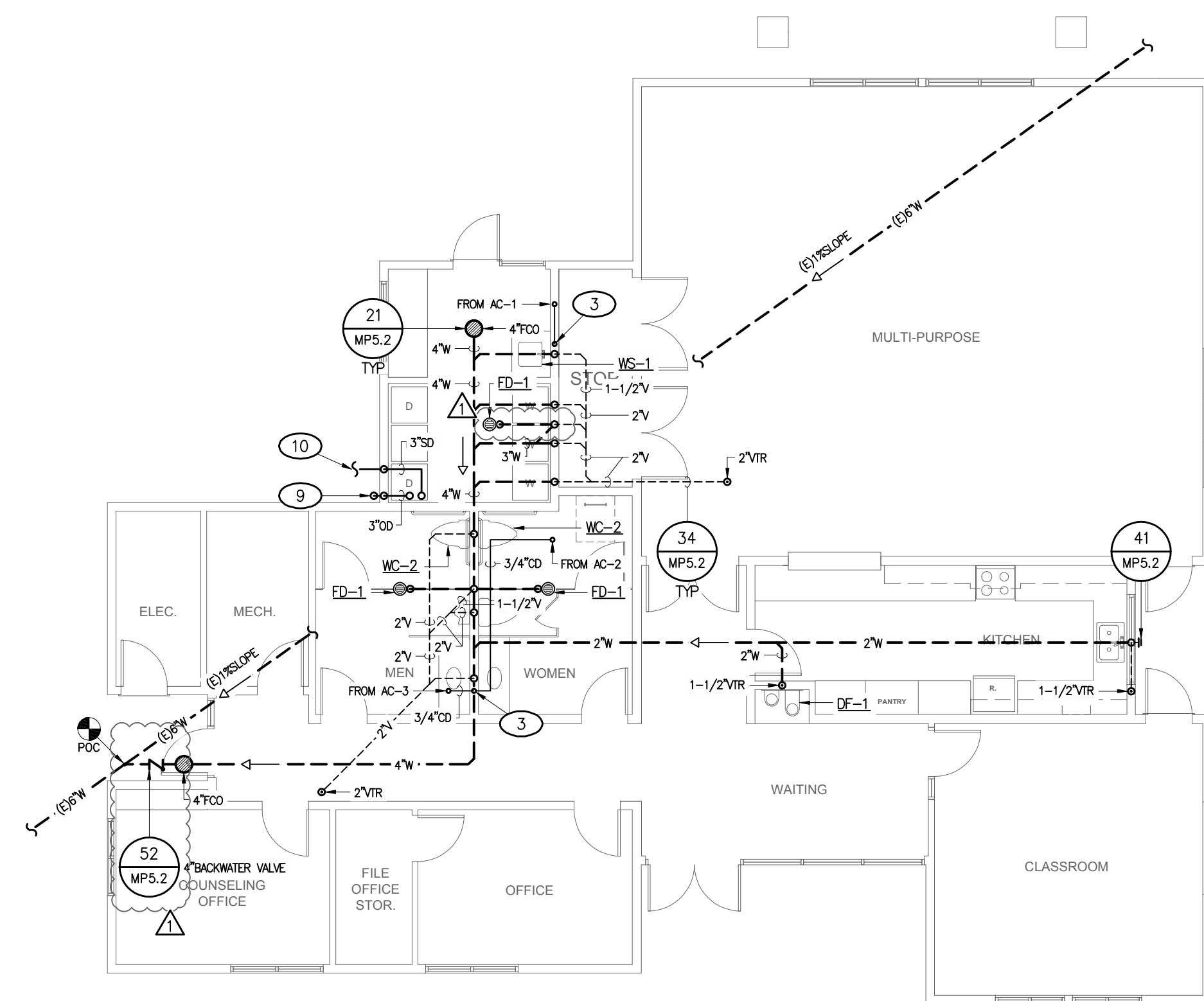
**SANITARY SEWER**

NEW DFU	EXISTING DFU	TOTAL DFU	BUILDING SLOPE	PIPE SIZE
31	-	31	1/4" PER 1'-0"	4"

SIZED PER TABLE 7-5, 2007 CPC

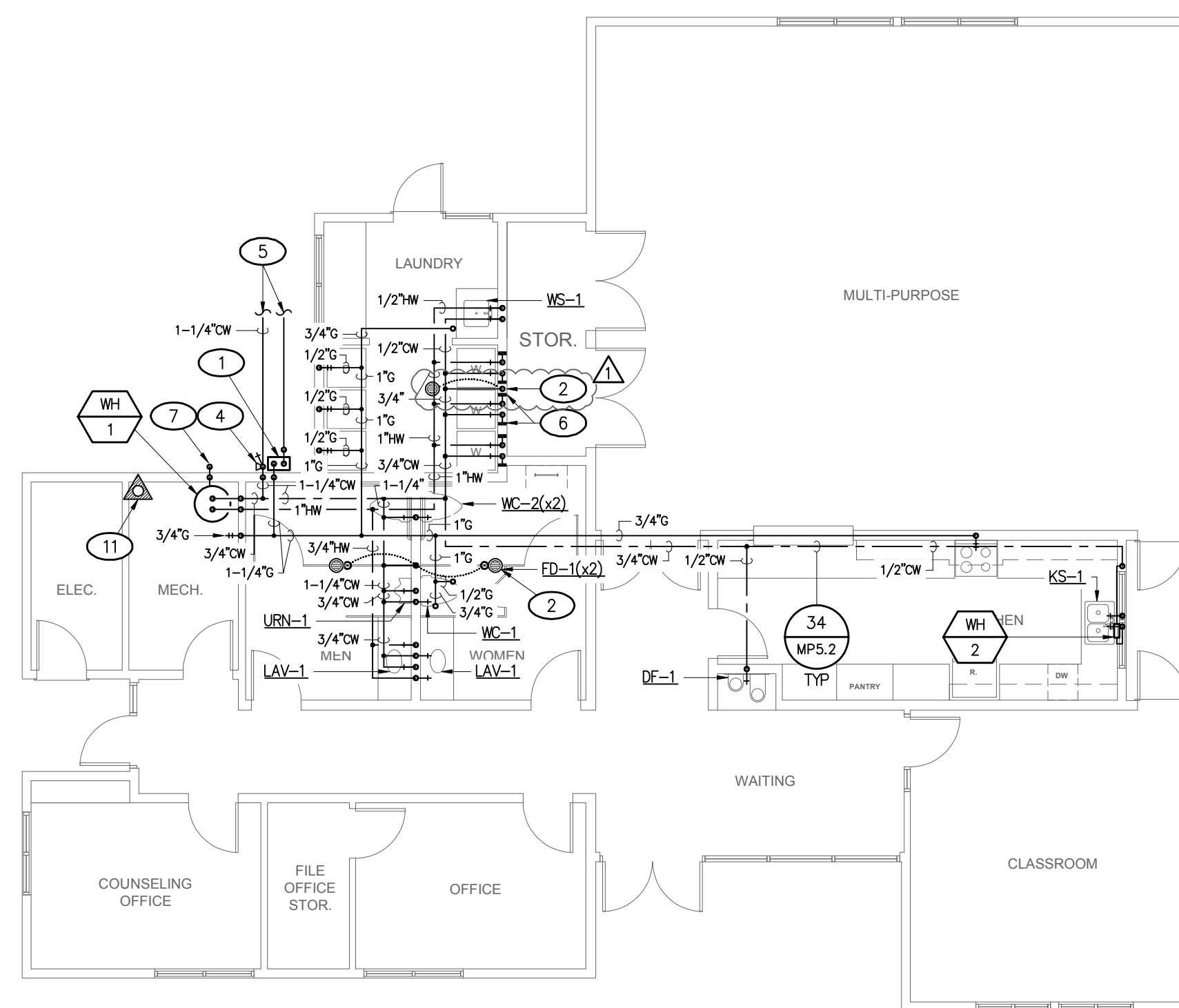
**REFERENCE NOTES**

- NEW GAS METER - BY GAS COMPANY. REFER TO DETAIL 42/MP5.2 FOR TYPICAL INSTALLATION
- 1/2" TRAP PRIMER TO FLOOR DRAIN 'P' TRAP - PROVIDE ACCESS PANEL & SHUTOFF VALVE AHEAD OF PRIMER VALVE & PROVIDE AN APPROVED AIR-GAP ON THE OUTLET SIDE OF THE TRAP PRIMER VALVE, REFER TO DETAILS 43 & 14, SHEET MP5.2 - TYPICAL
- 3/4" TYPE 'L' COPPER CONDENSATE DRAIN PIPING FROM AC UNITS ON ROOF TO LAVATORY TAILPIECE CONNECTION. SLOPE 1/8" PER FOOT TOWARD OUTLET ON ANY HORIZONTAL SECTION OF PIPING. PROVIDE MINIMUM 1" AIR GAP ABOVE P-TRAP WATER LEVEL. SEE DETAIL 44/MP5.2
- PROVIDE FULL PORT BRASS SOV & REGULATOR AT NEW RISER. REFER TO DETAIL 13/MP5.2
- REFER TO CIVIL SHEETS FOR CONTINUATION & NEW WATER METER LOCATION
- WATER HAMMER ARRESTOR AT CLOTHES WASHER CONNECTION. TYPICAL BOTH HOT & COLD WATER CONNECTIONS. TYPx3
- 3/4" TYPE 'L' COPPER P&T DRAIN FROM NEW WATER HEATER. CONNECT TO EXISTING P&T DRAIN LINE. RUN TO EXTERIOR TERMINATION. SLOPE MINIMUM 1/8" PER FOOT TOWARD OUTLET ON ANY HORIZONTAL SECTION OF PIPING. TERMINATE 6" ABOVE FINISHED GRADE - P&T RELIEF LINE SHALL NOT BE TRAPPED
- OUTSIDE AIR INTAKE. MAINTAIN 10' CLEAR FROM ALL PLUMBING VENTS AND FLUES. MAINTAIN 3' CLEAR FROM ALL ENVIRONMENTAL AIR EXHAUST
- 3" STORM DRAIN. TERMINATE MAX. 1" OUT FROM EXTERIOR WALL, 3" ABOVE FINISHED GRADE
- 3" STORM DRAIN PIPING, SEE CIVIL FOR CONTINUATION
- LOCATION OF NEW FIRE RISER-TO BE INSTALLED BY FIRE SPRINKLER CONTRACTOR-SEPARATE PERMIT AND APPROVAL SHALL BE OBTAINED FROM THE FIRE AND BUILDING DEPARTMENTS. REFER TO DETAIL 51/MP5.2



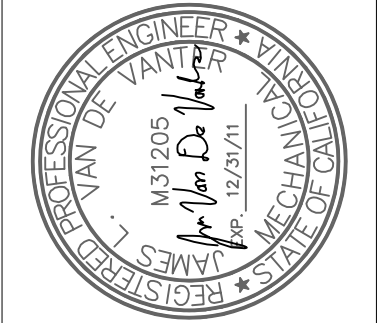
**PLUMBING - FLOOR PLAN, WASTE & VENT**

1/8" = 1'-0"



**PLUMBING - FLOOR PLAN, WATER & GAS**

1/8" = 1'-0"



PROJECT TITLE:  
**NEW COMMON BUILDING  
ROLLING HILLS APARTMENTS  
TEMPLETON, CA**

CLIENT:  
**FRASER SEIPLE ARCHITECTS  
8771 LOS ANGELES BLVD  
SAN LUIS OBISPO, CA  
(805) 544-6161**

SHEET TITLE AND DESCRIPTION:  
**PLUMBING  
SHEET TITLE**

DATE	REMARKS
04.15.2010	DESIGN DEVELOPMENT
05.17.2010	FIRST SUBMITTAL
08.18.2010	PLAN CHECK 1

PLOT DATE:  
**8/16/2010 8:00 AM**

DRAWN BY:  
**TDR**

JVA JOB #  
**M10024**

SHEET  
PLUMBING  
SHEET TITLE  
**MP4.1**