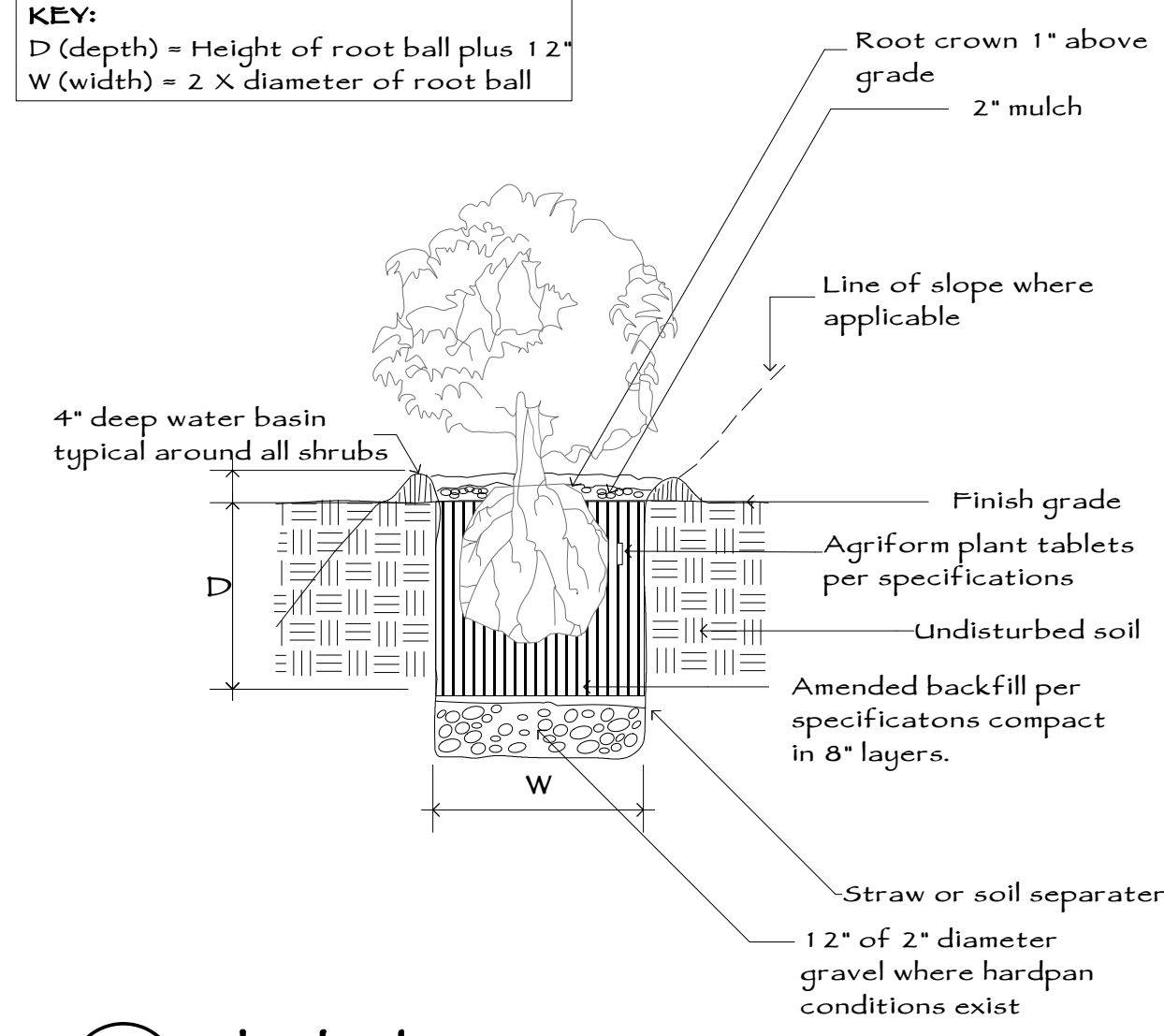


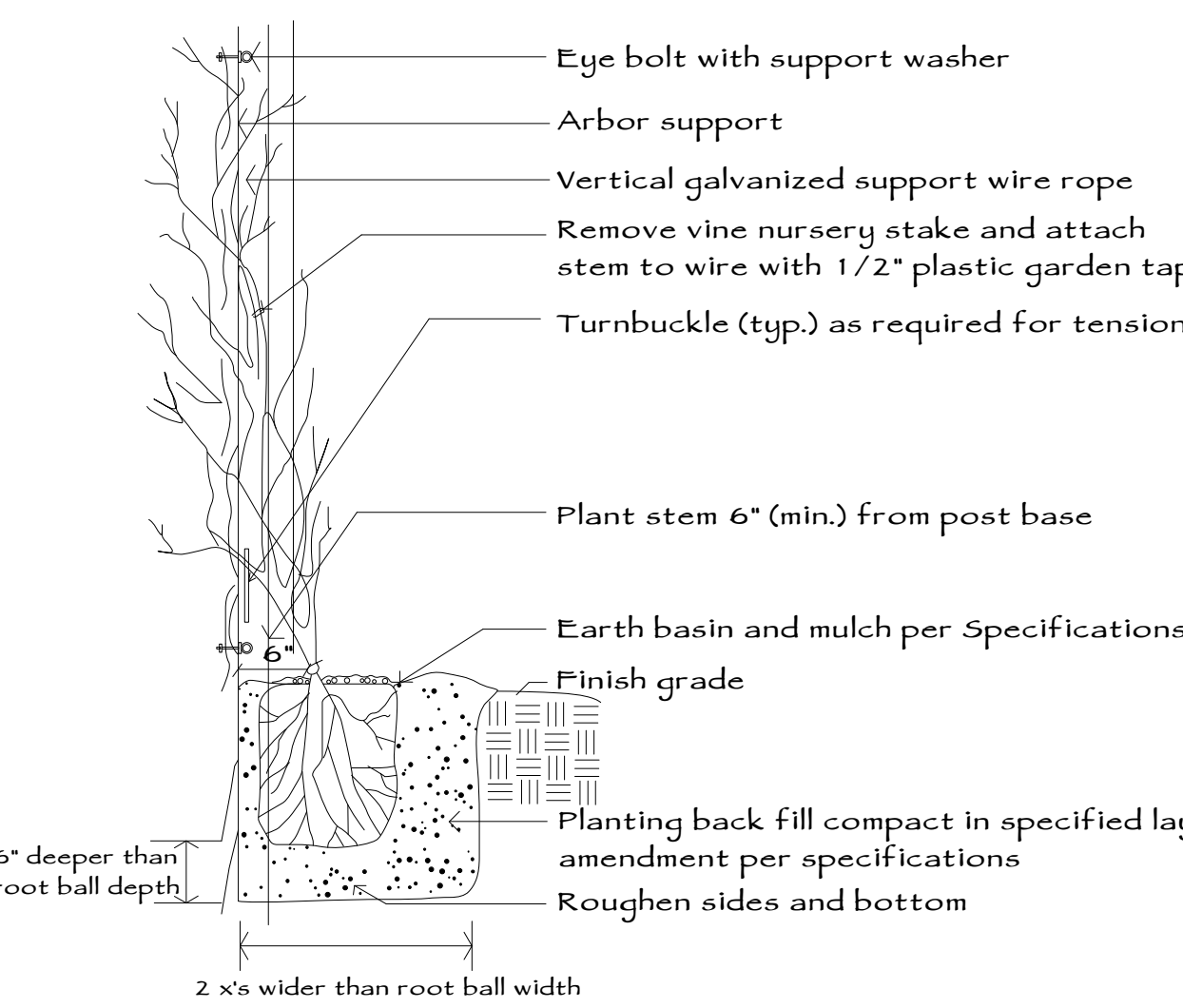
P1 Tree Staking and Planting

- Notes:
- A. Final tree placement shall maintain 8' minimum clearance from underground utilities.
 - B. Apply pre-emergent 'Ronstar' with 'Surflan' blended and applied per manufacturer's directions under mulch at each plant.



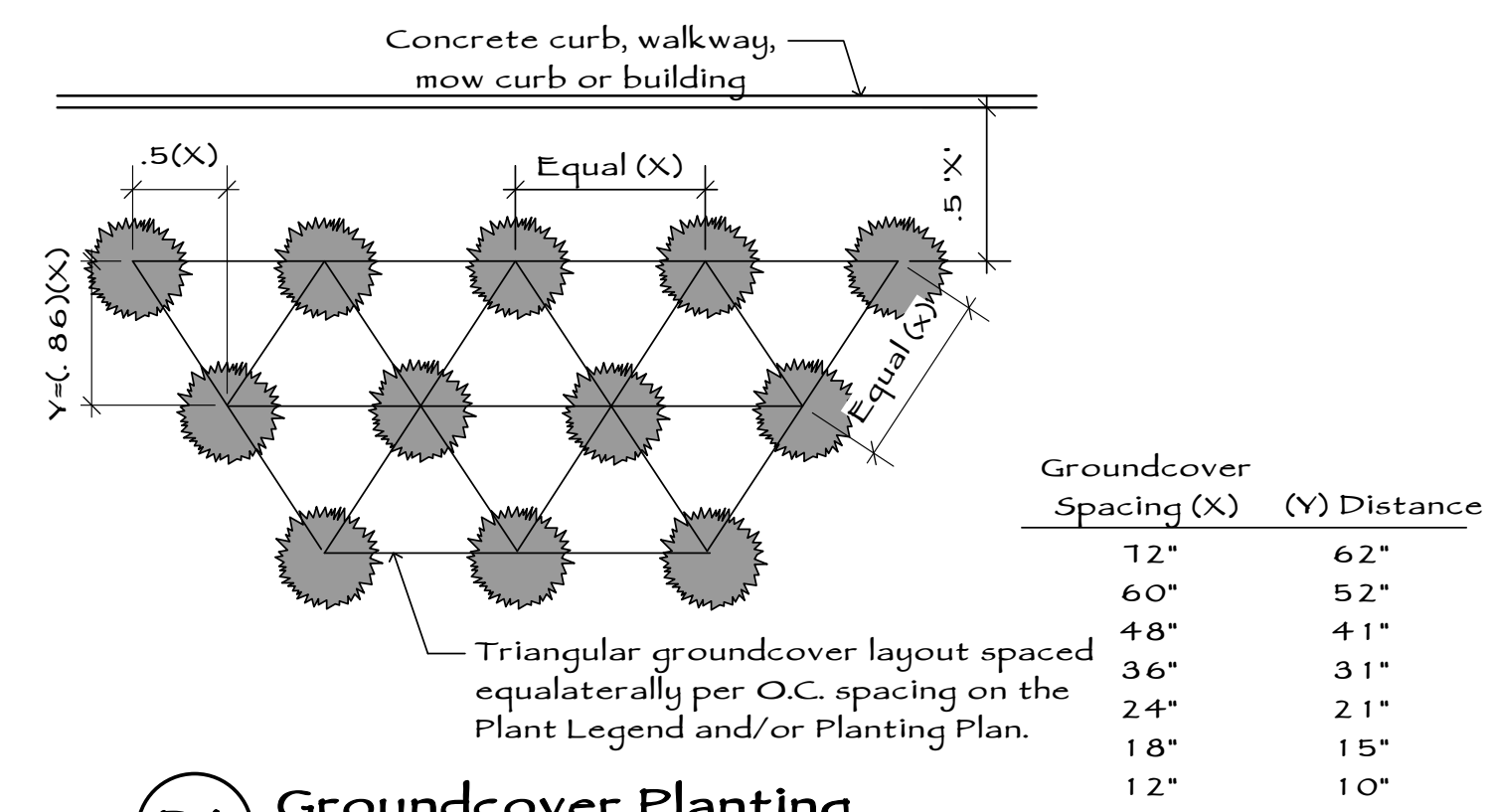
P2 Shrub Planting

- Note: Apply pre-emergent 'Ronstar' with 'Surflan' blended and applied per manufacturer's directions under mulch at each plant.

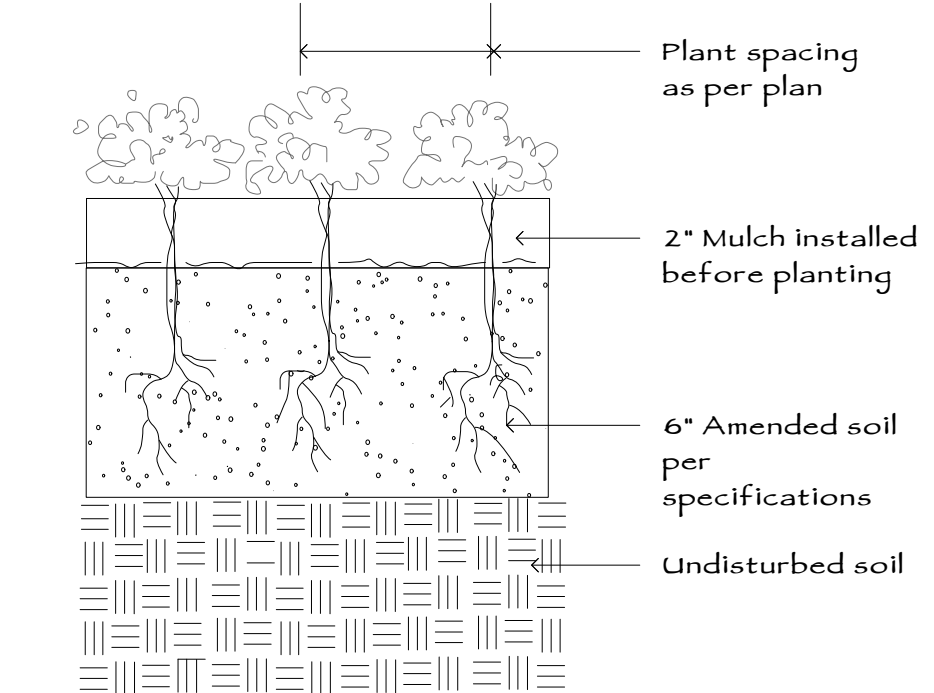


P3 Vine On Post Support

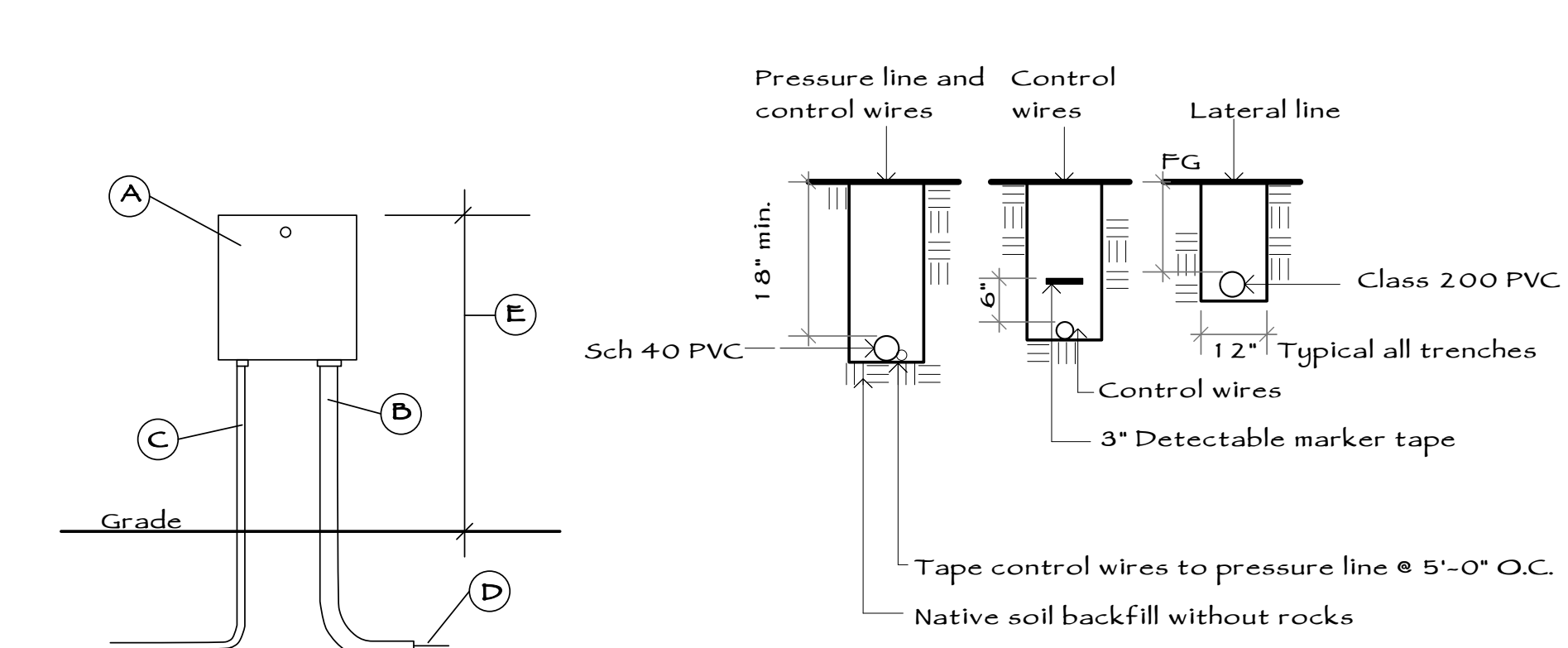
- Note:
- A. Plant vine per shrub planting Detail and Specifications - at 6 to 10' from vertical surface.



P4 Groundcover Planting



P5 Groundcover Planting - Section

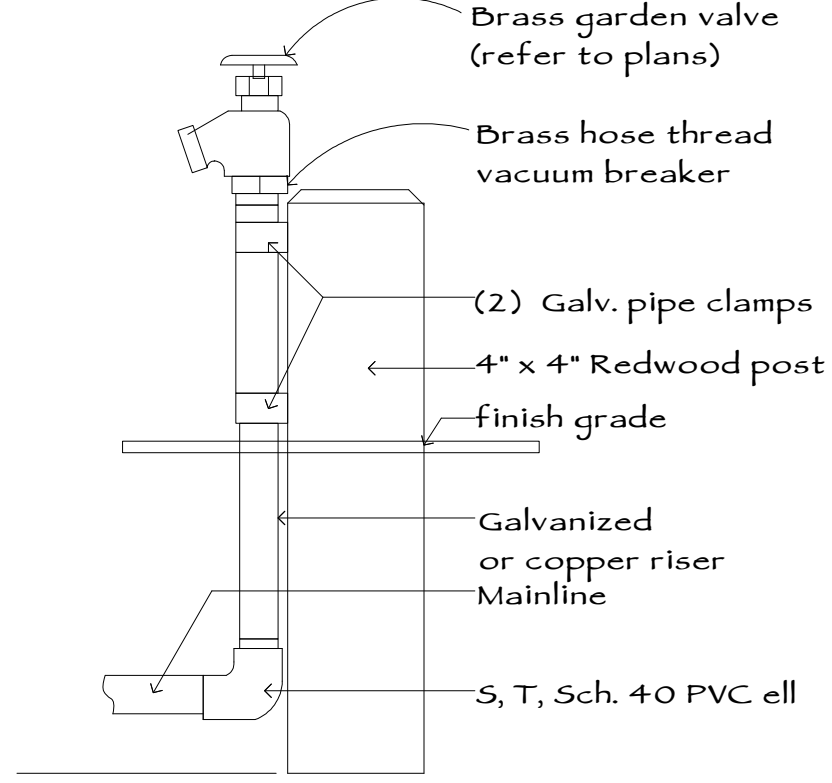


1 Irrigation Controller

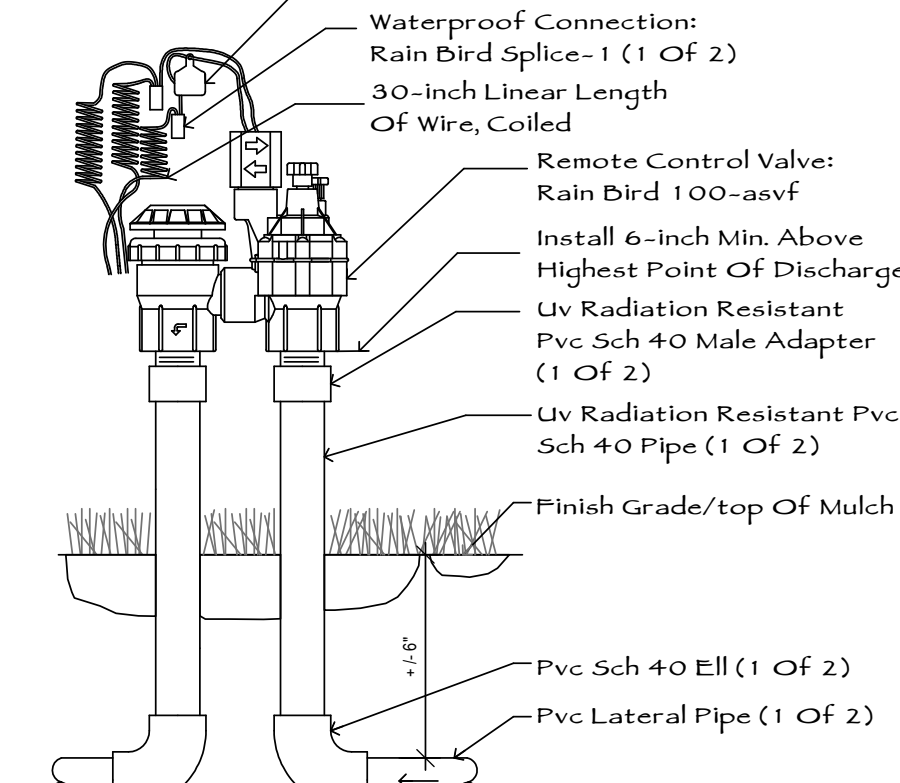
- A. Controller, bolt to exterior wall
- B. 2" Dia. PVC valve wire conduit
- C. 1" Dia. code approved 110V conduit
- D. 14 Gauge code approved direct burial valve wire
- E. Set Controller 60" above grade

2 Trenching

Note: Compact backfill to eliminate soil settling

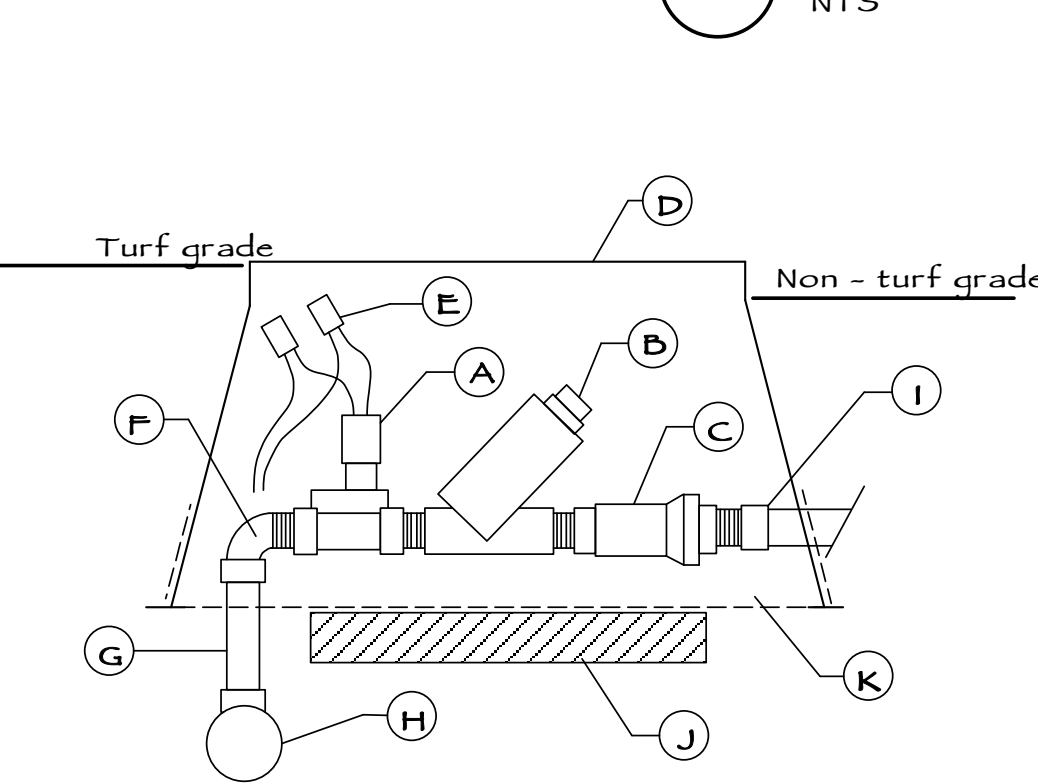


3 Hose Garden Valve



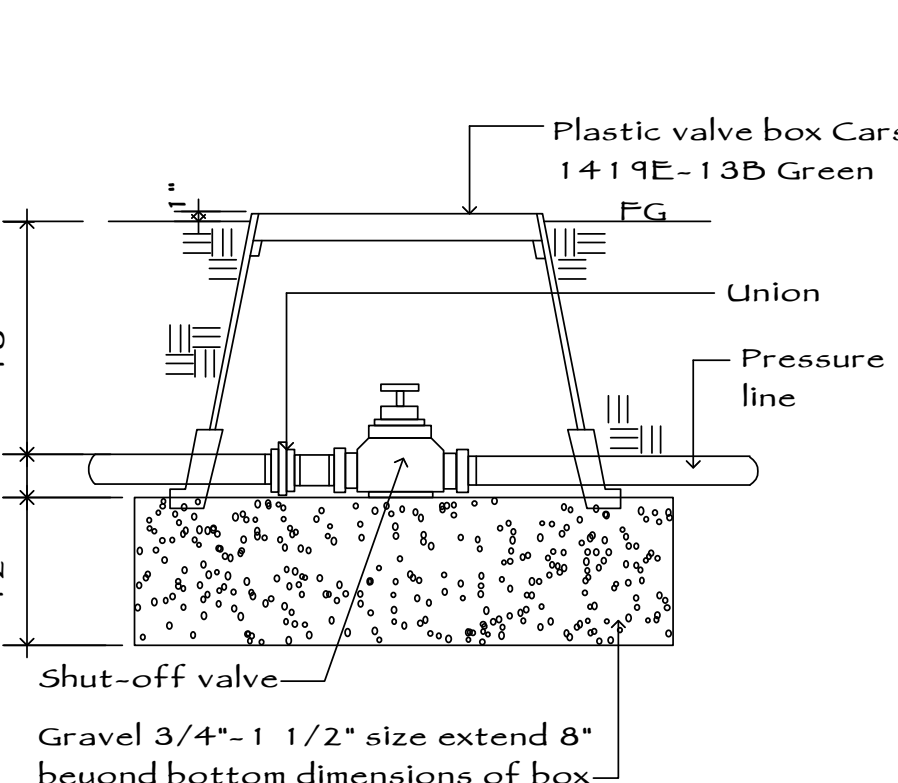
4 Anti-Syphon Valve

- Important Note: Use for proposed irrigation system if the point-of-connections is the new water service (meter) supply line
- Notes:
- A. Installation to be completed in accordance with Manufacturer's specifications.
 - B. Do not scale drawings.
 - C. Contractor's Note: For product and company information visit www.caddetails.com/Info
 - D. For drip applications, install filter and pressure regulator.

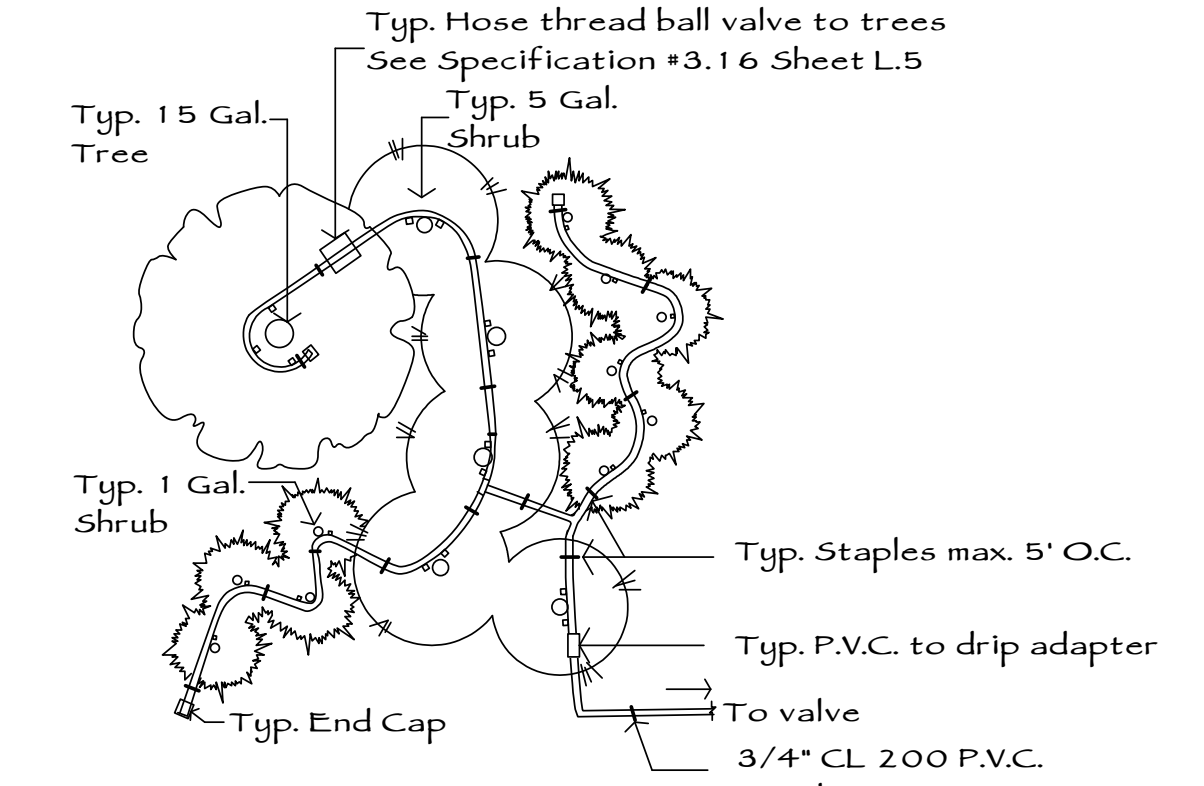


5 Electric Control Valve (Drip) (3/4")

- Important Note: Use for proposed irrigation system if the point-of-connection is the existing irrigation system mainline
- Notes:
- A. Rainbird 15 - DVX remote control valve, 3/4"
 - B. Rainbird RBY-015-200MX inline filter, 3/4"
 - C. Rainbird PSI-L30X-015 pressure regulator, 3/4"
 - D. Rectangular valve box with bolted T-cover
 - E. Silicone filled wire connectors
 - F. PVC ST. elbow, 3/4"
 - G. PVC schedule 40 riser, length as required, 3/4"
 - H. PVC mainline tee connection
 - I. PVC male adapter fitting and lateral to field
 - J. Gravel, 3/4" - 1 1/2" size. Extend 8" beyond bottom of box.
 - K. Optional 1/2" square galvanized wire cloth rodent screen

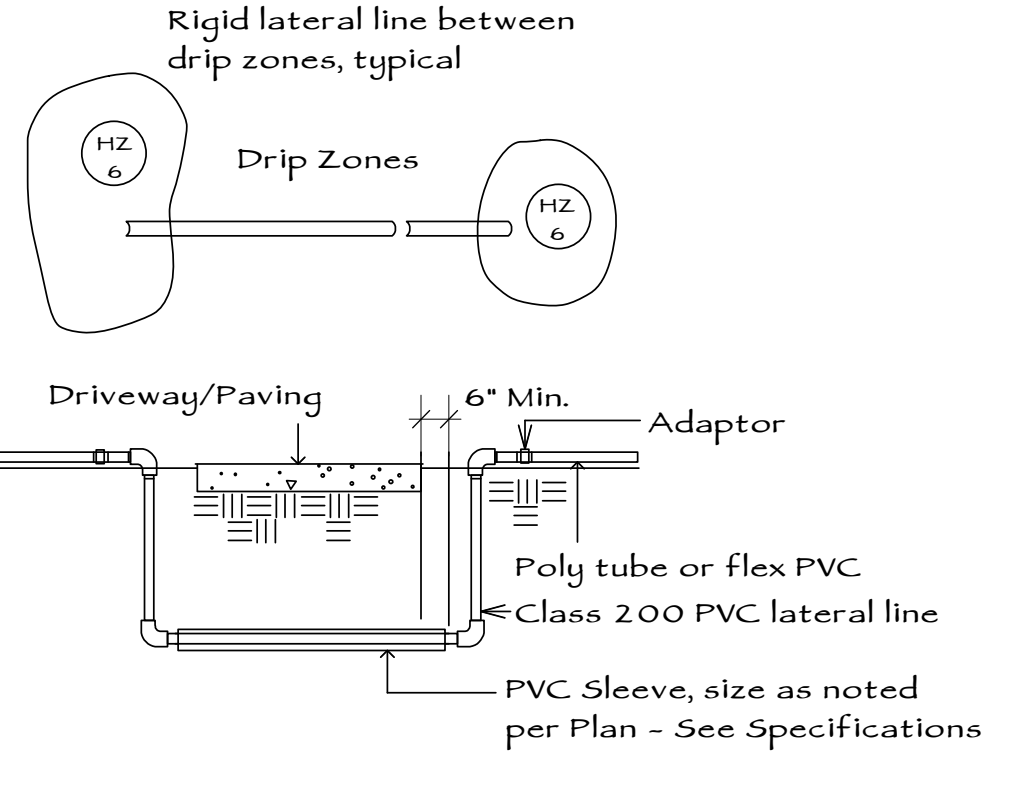


6 Isolation Valve

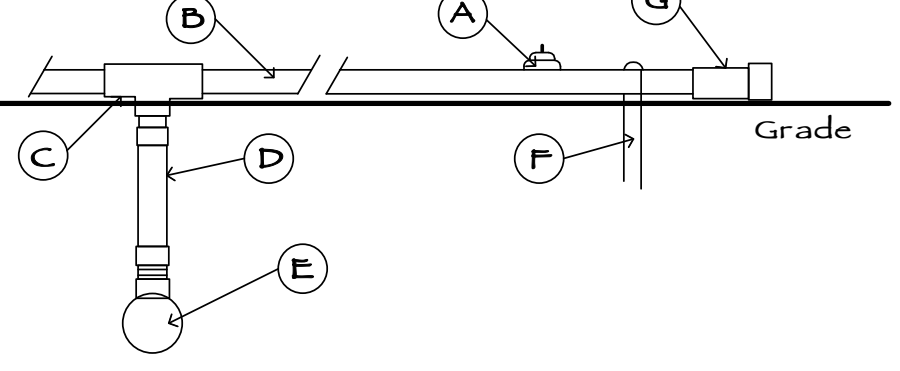


7 Drip Irrigation - Plan View (Level Areas)

- Notes:
1. Run 5/8" tubing to all root zones.
 2. Do not use vortex tubing.
 3. See Drip Tubing Diagram (Plan View) for drip systems on slopes.



8 Drip Zones



9 Drip Irrigation - Shrubs

- Notes:
- A. Netafim *WPC10 (2GPH) Emitters w/ Bug Caps:
 - 1 Gal. Plant - 1 emitter centered
 - 5 Gal. Plant - 2 emitters, one on each side
 - 15 Gal. Plant - loop pipe around plant, install 3 emitters equally spaced.
 - B. 1/2" PE Tubing, 100 ft. max. length from riser POC, sleeve thru 1 1/4" PVC under hardscape
 - C. 1/2" x 1/2" PE x FPT Tee (or elbow) (or KBI KC - noted per Plan)
 - D. 1/2" KBI *KC-0500-6 (or 3/4" IPS hose)
 - E. 3/4" x 1/2" SxSxT Tee (or elbow)
 - F. Poly tubing wire stake, 6 ft. on center
 - G. 1/2" PE x 3/4" Hose end tubing cap

10 Drip Irrigation - Trees

- Notes:
- A. (3) Netafim *WPC20 (2GPH) emitters w/ bug caps
 - B. 1/2" Polyethylene tubing ring, 24" diameter.
 - C. 1/2" x 1/2" PE x FPT tee on grade (or KBI KC - noted per Plan)
 - D. 1/2" KBI KC-0500-6 flex-riser (or 3/4" IPS hose)
 - E. 3/4" x 1/2" SxT elbow, riser to lateral connection
 - F. Poly tubing wire stake, (2) total
 - G. See Irrigation Specifications #3.16 Sheet L.5 and Detail 11

11 Drip System Head

- Note:
- 1) Netafim PC Emitter per each 1 gal. plant
 - 2) Emitters per each 5 gal. plant
 - 3) Emitters per each 15 gal. plant

PROJECT
ROLLING HILLS APARTMENT

NEW COMMON BUILDING

LAS TABLAS ROAD
TEMPLETON

CLIENT JOB # ARCHITECT JOB #
0708B

ARCHITECT
FRASER SEIPLE ARCHITECTS

LANDSCAPE CONSULTANT
Landsystems & Associates
Linda Shotwell
1418 Johnson Ave.
San Luis Obispo, CA 93401
805.543.2473

PROJECT MANAGER BDF

DRAWN BY

DATES 05-27-10
06-04-10

SIGNED

The use of these plans and specifications shall be restricted to the original site for which they were prepared and publication thereof is expressly limited to such use. Reproduction or publication by any method, in whole or in part, is prohibited. Title to these plans and specifications remain with the architect without prejudice. Visual contact with these plans and specifications shall constitute prima facie evidence of the acceptance of these restrictions.

Written dimensions on these drawings shall have precedence over scaled dimensions. Contractors shall verify and be responsible for all dimensions and existing conditions on the job and shall report any discrepancies to the architect for resolution prior to commencing work.

SHEET TITLE
DETAILS

SHEET #
L.4