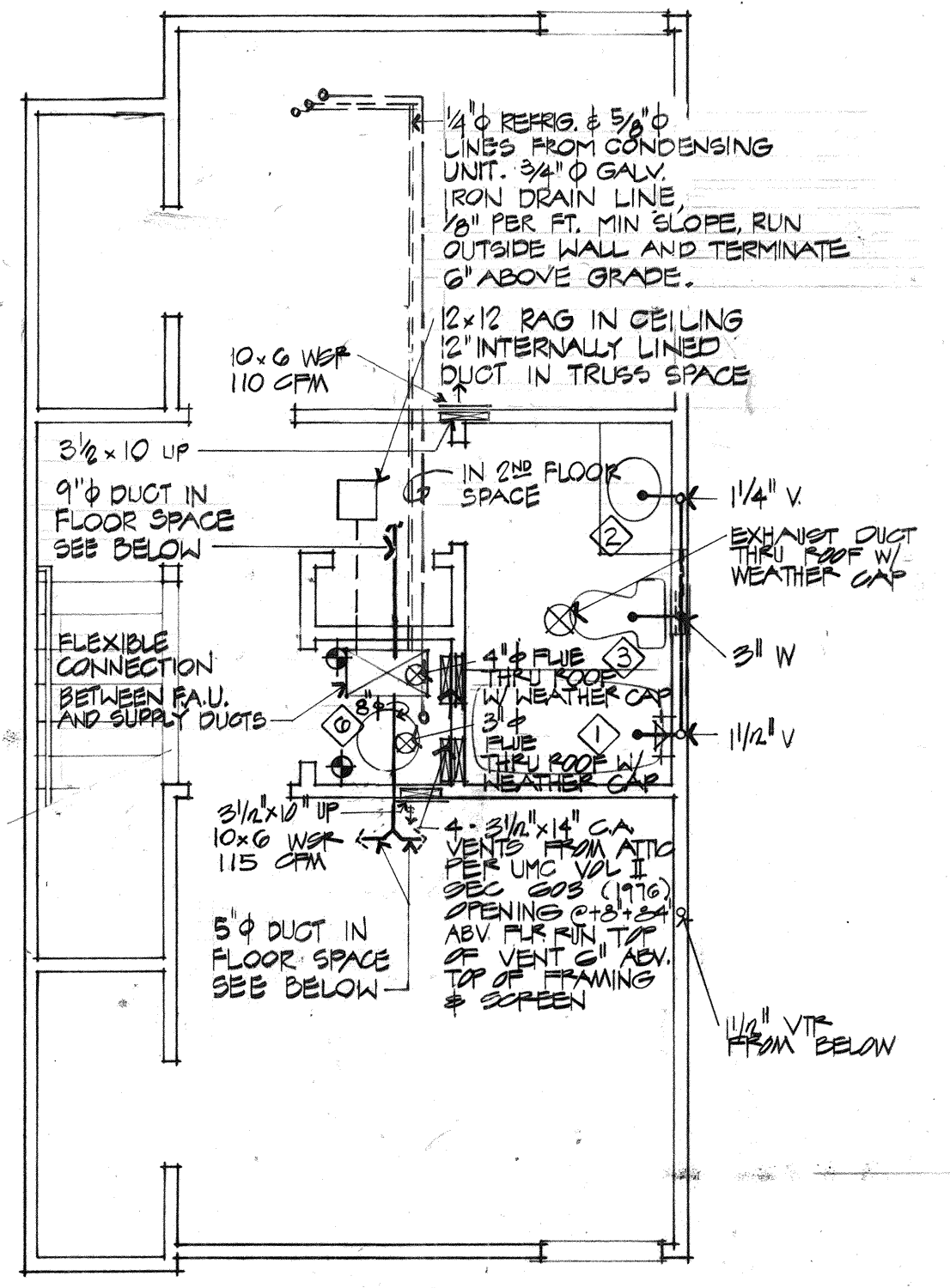
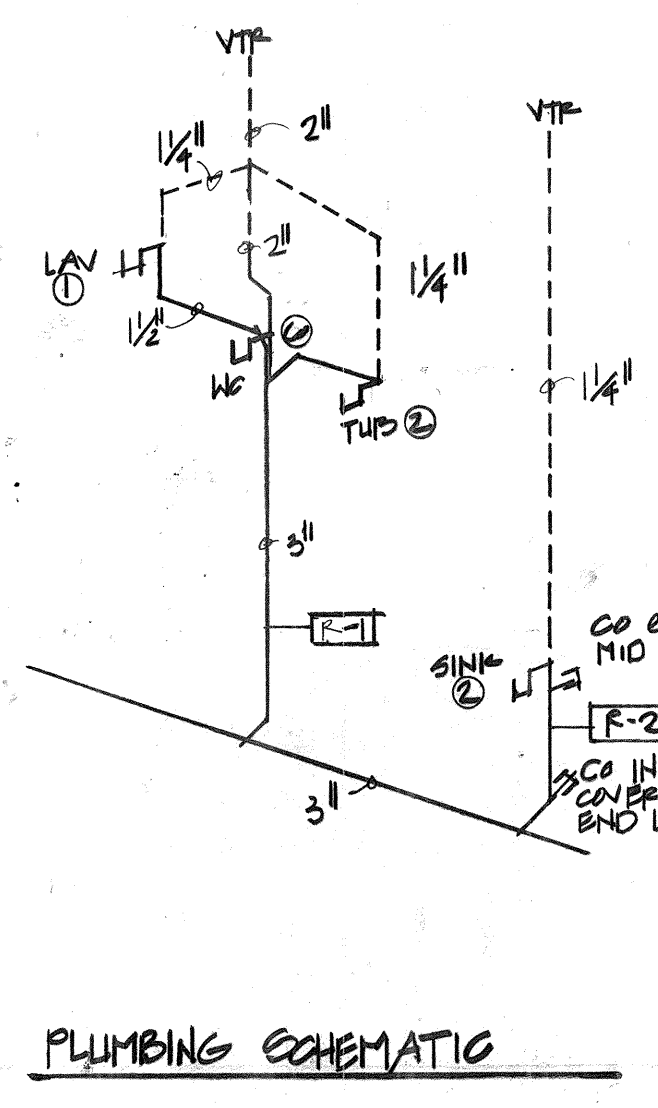


MECHANICAL PLAN
SCALE 1/4" = 1'-0"

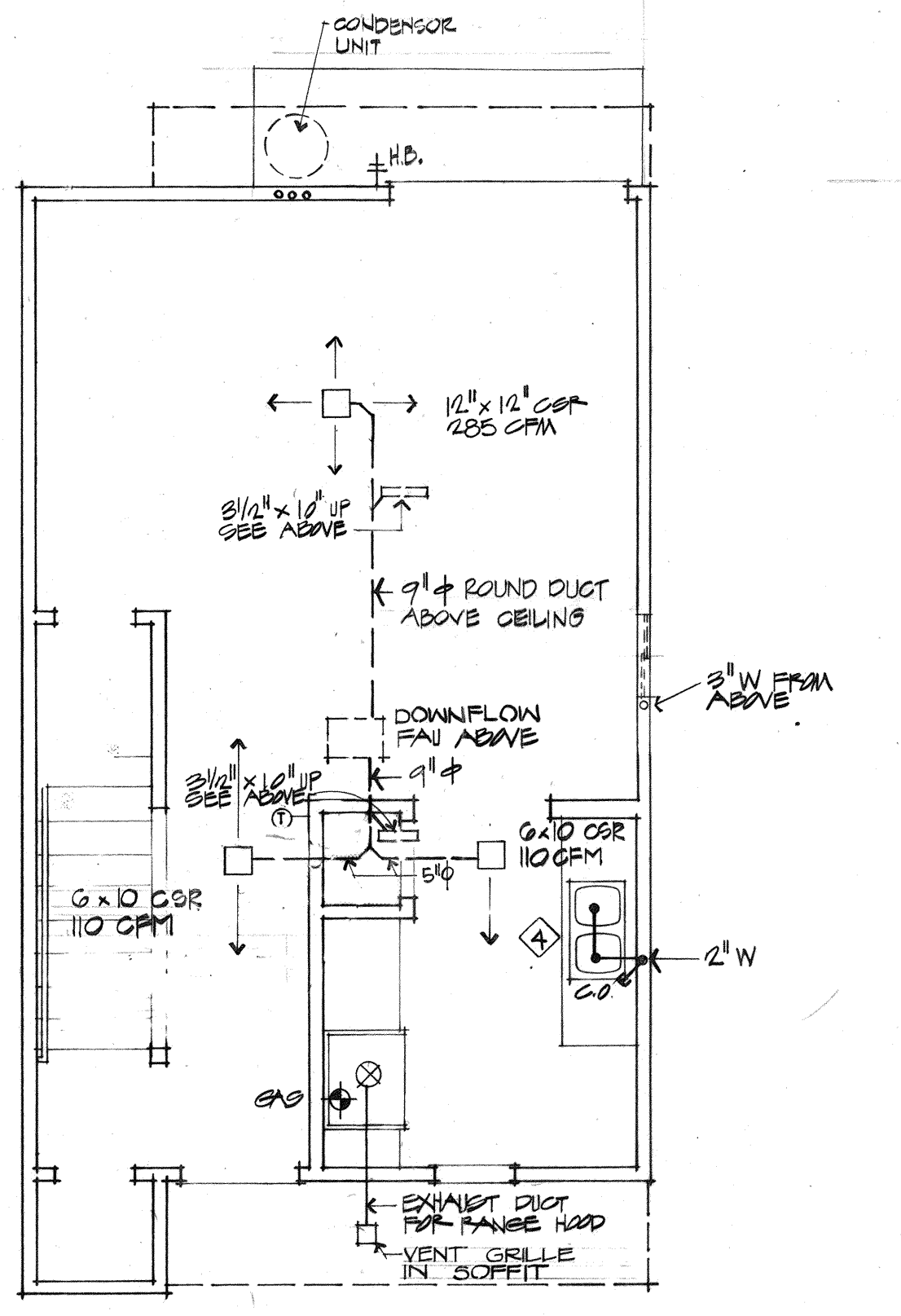


NOTES:
1. PLACE ALL WALL SUPPLY REGISTERS 1/4" BOTTOM OF BESS @ 1'-0"
2. ALL DUCT SIZES ARE MINIMUM INTERIOR DIMENSIONS

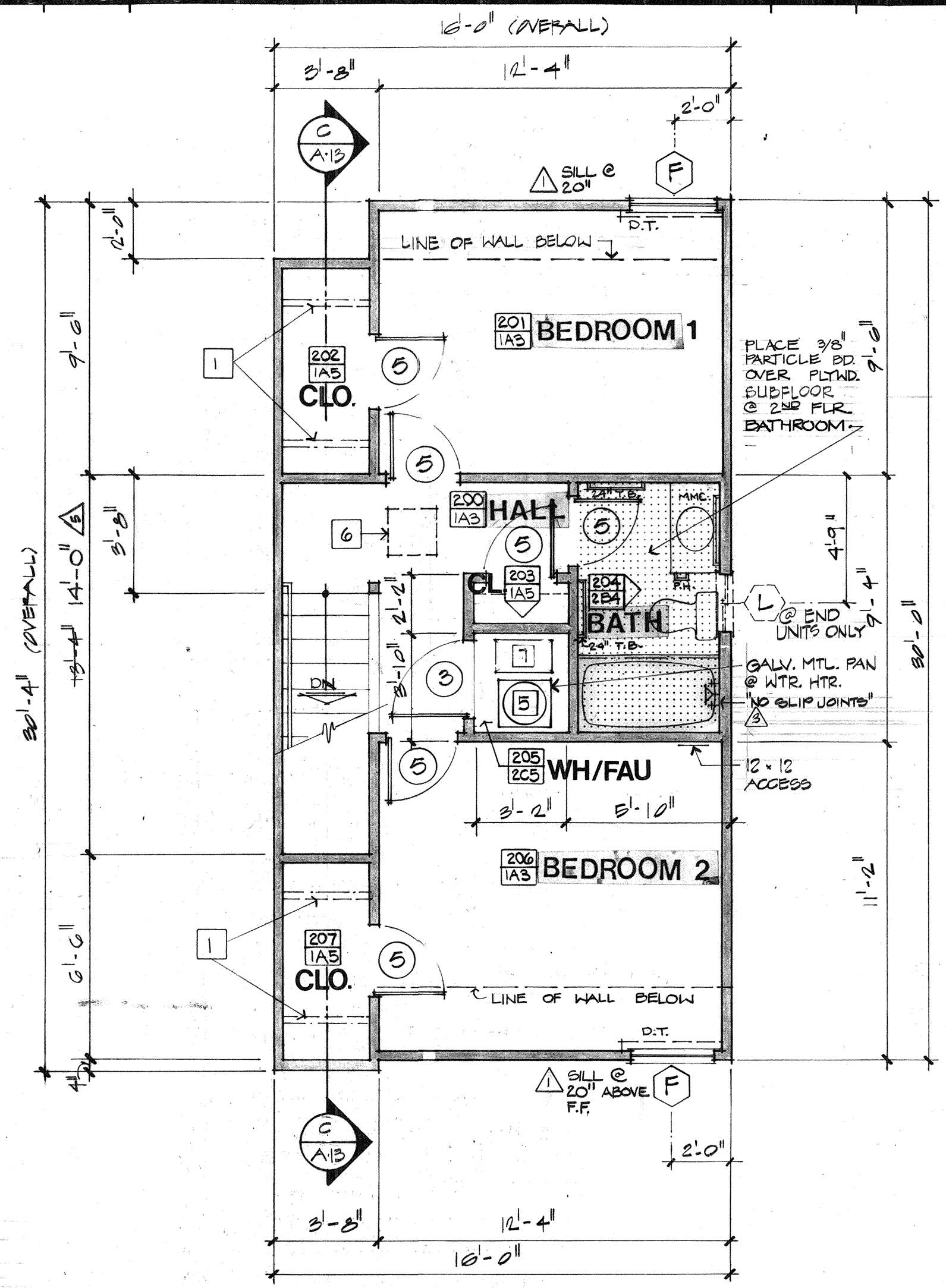


FOR ELECTRICAL AND LIGHTING INFORMATION REFER TO PLANS 5 & 6, SHEET E-3

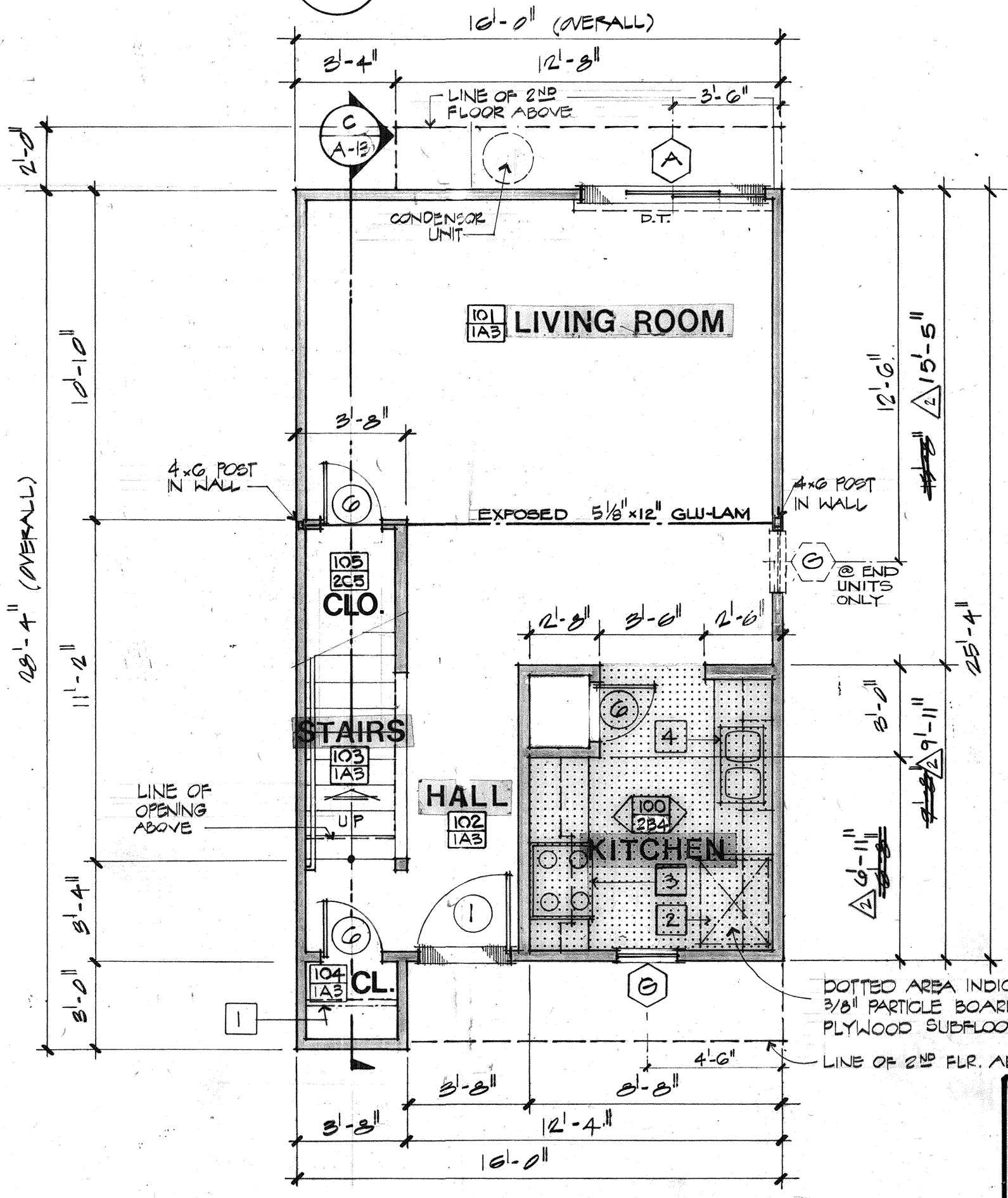
AREA TABULATION
GROSS - 890.8 sf
NET - 802.3 sf



MECHANICAL PLAN
SCALE 1/4" = 1'-0"



SECOND FLOOR PLAN
SCALE 1/4" = 1'-0"



FIRST FLOOR PLAN
SCALE 1/4" = 1'-0"

- ### MECHANICAL SYMBOLS
- Hose bib
 - Vent through roof
 - Vent Pipe
 - Waste line
 - Water heater
 - Clean out
 - Gas outlet
 - Plumbing fixture no. (see sched. sht A-6)
 - Return air grille
 - Ceiling supply register
 - Wall supply register
 - Combustion air
 - Cubic feet per minute

- ### ELECTRICAL SYMBOLS
- Ceiling mounted light fixture
 - Wall mounted light fixture
 - Exhaust fan (minimum 5 air changes/hr.)
 - Duplex receptacle, 1 outlet switched
 - Waterproof duplex receptacle
 - Switch
 - 3-way switch
 - Electrical panel brd.
 - Smoke detector
 - Thermostat
 - Duplex receptacle located on a circuit with a ground fault interruptor
 - Prewired cable TV outlet with RG59 cable per cable co.

- ### ARCHITECTURAL SYMBOLS
- Window symbol
 - Door symbol
 - Room number
 - Finish number (REFER TO SHEET A-6)
 - P.H. Paper holder
 - T.B. Towel bar
 - D.T. Drapery track
 - M+MC Mirror & medicine cabinet
 - FAU Forced air unit
 - C.R. Curtain rod

- ### PLAN NOTES
- Shelf and pole
 - Ref. space Refer to specs.
 - Range/oven Refer to specs.
 - Double sink Refer to plumbing schedule #4 Sht. A-5.
 - Water heater Refer to plumbing schedule #6 Sht. A-5.
 - 22" x 30" attic access
 - Smoke detector
 - Door chimes
 - Electrical panel board

THE MECHANICAL SYSTEM DESIGN FOR THESE UNITS IS IN ACCORDANCE WITH GOOD TRADE PRACTICE.

MECH. ENGINEER: *Rodney L. ...*

REVIEWED: 8-2-79

REGISTRATION: 4776 Oklahoma

★RECORD DRWGS.★

FARMERS HOME ADMINISTRATION

All construction performed under the provisions of these plans and specifications shall comply with FHIA prescribed standards. Review by FHIA of these plans, specifications and related documents does not authorize any violations of FHIA-RPS and other applicable building standards. FHIA is not responsible or liable for errors in or omissions from these documents or for deviations from these standards.

Reviewed this 4 day of June 1980

By: *Carolyn S. Maurer*

Avelino L. Manotas, FHIA, Architect

2 bedroom townhouse

rolling hills apartments

owner: Thomas A. McLaughlin
contractor: Rural California Housing Systems, Inc. (805) 544-0364

Meriam, Deacy and Whisenand, Inc. Architecture/Planning/Engineering
979 Ocos Street, Suite F, San Luis Obispo, California 93401 (805) 543-7057

job title: ES unit apartment development

These plans and specifications are instruments of service prepared for contract construction work and shall be used only under specific agreement with the architect

© mdw 1979

dates:
12/13/79
12/12/79
FINISH PLAN CHECK

checked: _____
approved: _____
issued: _____

bruce fraser
project manager

JMP
drawn by
Carolyn S. Maurer
signed C6524

job no. 7807

sheet
A-3
1 of 25 sheets